



PRIMARY
HEALTH CARE
CONGRESS



Programme

1st Primary Health Care Congress

THEME: Aligning practice to evidence in strengthening
Primary Health Care for lasting health change in Africa

**Nov 29 - Dec 1, 2023 | Amref International
University, Nairobi, Kenya**

www.phcongress.com

Platinum sponsors



Gold sponsors



Bronze sponsors



Partners



Day 1 - Wednesday, 29th November 2023

Time	Activity
	Master of Ceremony: Dr Josephat Nyagero, Dean of Students, Amref International University
8:00 am - 8.30 am	Arrival, registration of delegates & entertainment
8.30 am - 8.40 am	Anthems (Kenya, East Africa, SADC)
8.40 am - 8.45 am	Video on the journey of PHC
8.45 am - 9.00 am	Welcome remarks and recognition of sponsors <ul style="list-style-type: none"> Prof Joachim Osur, Vice Chancellor, AMIU
9.00 am - 9.15 am	Keynote address on Global Overview of PHC: Progress, Challenges and Opportunities <ul style="list-style-type: none"> HE Governor of Kisumu, Prof Anyang' Nyong'o
9.15 am - 9.45 am	Opening remarks <ul style="list-style-type: none"> Prof Emily Akuno, Vice Chancellor, JOOUST Dr Githinji Gitahi, GCEO, Amref Health Africa Hon. Susan Nakhumicha, Cabinet Secretary, Ministry of Health, Kenya
9.45 am - 10.00 am	<ul style="list-style-type: none"> Photo session with Cabinet Secretary and Sponsors
	<p>Plenary One Panel Session: Primary Health Care: The Past, Present and Future</p> <p>Moderator: Dr Alice Lakati, Director, Research and Community Extension, Amref International University</p> <p>Panelists:</p> <ul style="list-style-type: none"> Dr Patrick Amoth, EBS, Director General, Health, MoH Dr Meshack Ndirangu, Country Director, Amref Health Africa, Kenya Professor Dennis Wilms, McMaster University, Canada Dr Roy Shaffer, Mwalimu Mzee of Primary Health Care Ambassador Elkanah Odembo
11:00 am - 11:30 am	Networking Tea-Break / Poster Presentations

11.30 am - 1.00 pm	<p>Venue: AG 1</p> <p>Track 1.1:</p> <p>Community Participation and Engagement of Community Health Workforce</p> <p>Chair: Prof George Ayodo, JOOUST</p> <p>Co-chair: Dr Malkia Abuga, CHESOA</p> <p>Facilitator: Dr Faith Muhonja</p>	<p>Venue: AF 1.1</p> <p>Track 1.2:</p> <p>Models for Universal Health Coverage</p> <p>Chair: Dr Chris Barasa, Amref</p> <p>Co-chair: John Okere, Health Right, Kenya</p> <p>Facilitator: Christine Muya</p>	<p>Venue: A.F.1.2</p> <p>Track 2.2:</p> <p>Resilience</p> <p>Chair: Mr Peter Ofware, Health Right, Kenya</p> <p>Co-chair: Sr Dr Margaret Nyongesa, TUK</p> <p>Facilitator: Dr Michel Mutabazi</p>	<p>Venue: AF 2.1</p> <p>Track 1.3:</p> <p>Quality Service Delivery</p> <p>Chair: Dr Shiphrah Kuria-Amref</p> <p>Co-chair: Dr Shehu Awandu, JOOUST</p> <p>Facilitator: Lina Mwita</p>
	<p>*AO 33</p> <p>Caroline Murerwa- Amref Health Africa, Kenya:</p> <p>Nyumba kwa nyumba Onsite approach to improve uptake of COVID-19 Vaccination in peri-urban population of Kajiado County, Kenya</p>	<p>*AO 90</p> <p>Frida Akyoo- SOLIDARMED, Tanzania:</p> <p>A need assessment for People-centred Primary Health Care (PHC) project in Malinyi District Council- Tanzania- February 2023</p>	<p>*AO179</p> <p>Faith Masika, USAID Western Kenya Sanitation Project, Siaya, Kenya</p> <p>Co-creating behavior change Communication for market-based menstrual health and hygiene: Case of USAID funded Western Kenya Sanitation Project.</p>	<p>*AO 271</p> <p>Catherine Gitau: Thinkplace Kenya.</p> <p>Utilizing a ticketing service for equity, accountability, and efficiency in MCH service delivery in Kakamega County, Kenya</p>
	<p>*AO 55</p> <p>Dennis Menya-Catholic Medical Mission Board, Kenya:</p> <p>Beyond Clinical Care: Peer-led Approach through Community Adolescent Treatment Supporters to Improve retention and Viral suppression among Adolescents Living with HIV in Siaya, Kenya</p>	<p>*AO 208</p> <p>Janekellen Mbae- Amref Health Africa, Kenya:</p> <p>Impact of Convenience on COVID -19 Vaccination Uptake; A study of Africa CDC Urgent Support Rapid Response Initiative in Kenya, May-June 2022</p>	<p>*AO 156</p> <p>Gabriel Kotewas- Department of Health, Homa Bay County Kenya</p> <p>Effectiveness of indoor residual spray on malaria control; review of malaria cases among children under five years in Rachuonyo North Sub County, Homa Bay County.</p>	<p>*AO 315</p> <p>Dennis Mwiti-Amref Health Africa South Sudan:</p> <p>Monitoring the quality of laboratory testing at primary healthcare level through participation in a proficiency testing programme</p>

	<p>*AO 144</p> <p>Aisha Mohammed- D-tree, Tanzania: The Use of Jamii ni Afya (JnA) Data in Improving Primary Health Care Services in Zanzibar</p>	<p>*AO 129</p> <p>Tesfahun Meto- Arba, Minch University, Ethiopia: Health-Related Quality of Life between Insured and Uninsured Households at Rural Communities of Southwestern Ethiopia, December 2022: A Comparative Cross-Sectional Study</p>	<p>*AO 205</p> <p>Mercy Lodendwa Ministry of Health, Vihiga County, Kenya Reach every child strategy for improving access and utilization of immunization Services in Hard-to-Reach Areas: a case of Mambai Community Unit, Vihiga County, Kenya</p>	<p>*AO 275</p> <p>Eric Omondi: Public Health and Development, Kenya, Enhancing Oxygen Access in Primary Health Care Facilities in Bungoma County, Kenya: Evaluating Innovative Approaches</p>
	<p>*AO 48</p> <p>Crinoline Kiriago- Population Services Kenya: Meaningful adolescent and youth engagement; harnessing the power of participation to bring positive impact-a case study of Binti Shupavu program in Homabay County</p>	<p>*AO 303</p> <p>Theresia Peter -Catholic Medical Mission Board, Kenya: Linda Uzazi: A Multifaceted Approach Towards Improving Maternal and Child Health Outcomes in Underserved Communities of Kitui County</p>	<p>*AO 142</p> <p>Ruth Vellemu, Amref Health Africa, Malawi: Eliminating Gender-based violence against women and girls by addressing underlying causes and ensuring access to reproductive health rights: A case story of Spotlight Initiative, Malawi</p>	<p>*AO 157</p> <p>Gabriel Kotewas-Homa Bay Department of Health: Developing a customized approach for strengthening Quality laboratory diagnostics in resource-limited settings: Lessons from Homa Bay County Inter-Laboratory Comparison program</p>
	<p>*AO 148</p> <p>Ruth Vellemu- Amref Health Africa, Malawi: Expanding Access to COVID-19 Vaccines Through Door-to-Door Approach in Malawi</p>	<p>*AO 39</p> <p>Shegaw Mulu- MOH, Ethiopia: The Capacity of the Ethiopian Primary Health Care System to Achieve Universal Health Coverage and SDGs</p>	<p>*AO 270</p> <p>Victor Bwire, Jacaranda Health, Nairobi: Application of user-centred design in strengthening the participation of communities in the implementation of Service Delivery Redesign in Kakamega County</p>	<p>*AO 268</p> <p>Milliam Ngugi- LVCT Vukisha 95, Kisii County Ministry of Health, Kenya: Quality client-centred services for the Key Population in Magena Hospital, Kisii County</p>

	<p>*AO 16</p> <p>Wallace Karuguti,-Jomo Kenyatta University of Science and Technology, Kenya: Communities' views, attitudes, and recommendations on community-based education of undergraduate Health Sciences students in South Africa</p>	<p>*AO 195</p> <p>Young Samanyika, Amref Health Africa, Malawi: Combating low COVID-19 Vaccination Uptake through a myriad of Mobilisation Approaches: A case of Saving Lives and Livelihoods Project, Malawi</p>		<p>*AO 294</p> <p>Alice Lakati-Amref International University, Kenya: Evaluation of the Pioneer Amref Nursing Oncology Programme in Kenya</p>
	<p>*AO 60</p> <p>Desalegn Zegeye- Amref Health Africa, Ethiopia: An Innovative Approach to Improving Primary Health Care Services in Ethiopia: A Woreda-Level Co-Design Workshop</p>	<p>* AO 67</p> <p>Prof Joachim Osur-Amref International University, Kenya: Epidemiology of Sexual Dysfunctions: The Case of Patients at the Sexology Clinic, Nairobi Kenya</p>		<p>*AO 216</p> <p>Prudence Khaoya-Kenyatta University, Kenya: Universal Access to Maternal Health Care in Bungoma County Through the Primary Health Care Project</p>
	<p>AO 47</p> <p>Dalmas Onyango- Witu Community Development Platform, Lamu, Kenya: Community Health Volunteers (CHVs) as key drivers of Access to Primary Health Care (PHC) Services by People Living with HIV (PLHIV) in Lamu County</p>	<p>AO 71</p> <p>Silas Awuor, Microbiology Department, Jaramogi Oginga Odinga Teaching and Referral Hospital, Kenya: Expanding the use of community health workers in rural settings: a potential strategy for progress towards universal health coverage</p>		
<p>1:00 pm- 2:00 pm</p>	<p>Lunch/ Poster Presentations/Networking</p>			

	<p>Venue: AG 1</p> <p>Panel Discussion 1:</p> <p>Empowering Primary Healthcare workers for better child and Maternal Health by LactaHub Foundation</p> <p>Chair: Josephine Munene Co-chair: Mili and Esther Facilitator: Valary Jerop</p>	<p>Venue: AF 1.1</p> <p>Panel Discussion 2:</p> <p>Medical Equipment Management by Centre for Public Health Research and Development (CPHD)</p> <p>Chair: Caroline Kendi Co-chair: Amos Mumanyi Facilitator: Dr Michel Mutabazi</p>	<p>Venue: AF 2.1</p> <p>Panel Discussion 3:</p> <p>Fundamentals of Primary Health Care Delivery Models in Kenya: Functionality and Sustainability of Primary Care Networks in Kenya by Amref, Kenya</p> <p>Chair: Dr Chris Barasa Facilitator: Dr Faith Muhonja</p>	
<p>4.00 pm- 4.15 pm</p>	<p>Networking Tea-Break / Poster Presentations</p>			
<p>4.15 pm- 5.45 pm</p>	<p>Venue: AG 1</p> <p>Track 1.4: Digital information for PHC</p> <p>Chair: Dr Shehu Awandu, JOOUST Co-chair: John Okere, Healthright Facilitator: Christine Muya</p>	<p>Venue: AF 1.1:</p> <p>Track 2.1: Resilience</p> <p>Chair: Evelyne Opondo, ICRW Co-chair: Dr Michel Mutabazi, AMIU Facilitator: Timothy Sato</p>	<p>Venue: AF 1.2</p> <p>Track 1.2: Models for Universal Health Coverage</p> <p>Chair: Dr Micah Matiang'i Co-chair, APHRC Facilitator: Jarim Omogi</p>	<p>Venue: AF 2.1</p> <p>Track 2.2: Livelihoods</p> <p>Chair: Mr Samuel Muhula, Amref Co-chair: AMIU Facilitator: Valary Jerop</p>
	<p>*AO 276</p> <p>Imelda Onchari-CPHD, Kenya: Monitoring Power Quality in Homabay, Siaya, and Vihiga County Referral Hospitals, Kenya</p>	<p>*AO 207</p> <p>Mercy Lodendwa -MOH Vihiga County, Kenya: Use of community dialogue in malaria control social behavior change intervention among women of Mambai community unit, Vihiga County, Kenya</p>	<p>*AO 212</p> <p>Sechelanji Nambela Amref Health Africa, Zambia: Utilizing Targeted Outreach Approaches such as Local Market Days to Scale-up Access to Covid-19 Vaccinations in Luapula-Zambia Sept 22-July 23</p>	<p>AO 272</p> <p>Paul Ndeda Jacaranda Health, Kenya Empowering Mothers with Health Information through PROMPTS: A Transformative AI-Enabled Solution</p>

<p>*AO 245</p> <p>Emmanuel Otieno1- Kenya Malaria Youth Corps Male, Kenya: Leveraging Digital Information for Primary Healthcare: A Case Study of the Kenya Malaria Youth Corps</p>	<p>*AO 59</p> <p>Dennis Ekada- Academic Model Providing Access to HealthCare: AMPATH: Chamas for Change, a Primary Health Care service delivery intervention in pregnancy and infancy among communities in Western Kenya</p>	<p>*AO 214</p> <p>Tseo Silane CHAL, Lesotho Strengthening Covid-19 Vaccination data management for effective epidemic control in Lesotho</p>	<p>*AO 29</p> <p>Harun Owuor-KEMRI, Kenya: Predictors of under-five mortality in Siaya County, Western Kenya Between 2015 and 2020</p>
<p>*AO 140</p> <p>Gloria Kokwijjuka- Amref Health Africa in Tanzania: The effect of digitalization of data collection tools on data quality</p>	<p>*AO 103</p> <p>Magdaline Lipesa-BHESP, Kenya: Approaches to tackle FGM among the AGYW in Narok County</p>	<p>*AO 215</p> <p>Yekeye Raymond ZACK, Zimbabwe: Impact of the Blended Vaccination Service Delivery Model in Increasing Vaccine accessibility to underserved communities of Mashonaland West and Midlands provinces Zimbabwe January- July 2023</p>	<p>*AO 313</p> <p>Joan Ondiro-Jaramogi Oginga Odinga University of Science and Technology: Promoting a Patient-Centred Approach for Improved Tuberculosis Treatment Outcomes in Nairobi County, Kenya</p>
<p>*AO 191</p> <p>Andolo Miheso, PATH, Kenya: Digital health tools to improve quality of care for child survival, growth and development</p>	<p>*AO 21</p> <p>Mariam Florence Yusuf- University of Nairobi, Kenya: Examining the relationship between Partner-related Violence- Contraceptive Use and Consumption of COVID-19 Vaccination (in) Fertility Fears: An Ethnography of Young Women in Khwisero, Kenya</p>	<p>*AO 309</p> <p>Yvonne Opanga, Amref Health Africa, Kenya: Drivers Of Primary Health Care Exemplars in Last Mile Populations In Turkana County, Kenya</p>	

<p style="text-align: center;">*AO 24</p> <p>Georgiah Nyamtondo Kasori-Amref Tanzania: Community health workers (CHWs) as game changer in improving tuberculosis case notification: Experience from Pwani Region in Tanzania</p>	<p style="text-align: center;">*AO 32</p> <p>Dickson Mwira-AHA, Kenya: Mobile vaccination clinic potential in improving last mile delivery of COVID-19 vaccination in Marsabit County, Kenya</p>	<p style="text-align: center;">*AO 51</p> <p>Dennis Menya- Catholic Medical Mission Board, Siaya, Kenya: Breaking the Silence: Building Sustainable and Resilient Community Structures to Mitigate Sexual Gender-based Violence in Gem, Kenya</p>	<p style="text-align: center;">*AO 231</p> <p>Efraem Kivuyo-Amref, Tanzania: Leverage the Existence of routine program activities in responding to an emergency outbreak of diseases: A case of Murburg Virus Diseases Outbreak Kagera Region, Tanzania</p>
<p style="text-align: center;">*AO 297</p> <p>Wilfred Otambo- Catholic medical-mission-Ken: Utility of Active Case Detection of epidemic malaria in Nyamira County, Western Kenya</p>	<p style="text-align: center;">*AO 293</p> <p>Philex Onyango, Ugunja, Kenya: Improving Skilled birth through Community Participatory Learning and action approach in Siaya County</p>	<p style="text-align: center;">*AO 6</p> <p>Rael Akoru-Turkana County Government, Kenya: Addressing Access to health care services for Children through Schools Integrated Medical Outreaches (SIMOs)</p>	<p style="text-align: center;">*AO 249</p> <p>Monicah Mwangi-Masinde Muliro University of Science and Technology: Factors influencing sports participation among pupils with Vision Impairment (VI) attending special and inclusive schools in Kakamega County, Kenya</p>
<p style="text-align: center;">*AO 185</p> <p>Catherine Timanoi- Amref International University: Utilization of one health 'Kimormor' Multi-Sectoral Outreaches for enhanced Nutrition Interventions in Migratory Pastoral Communities of Turkana County, Kenya</p>		<p style="text-align: center;">*AO 296</p> <p>Naomi Waicha, Jacaranda Health, Nairobi, Kenya: Leveraging Private Sector Partnerships to Sustainably Connect High-Risk Mothers to Emergency Transport and Appropriate-Level Quality Care in Kakamega County, Kenya</p>	<p style="text-align: center;">*AO 11</p> <p>Nancy Gathi - Health Right, Kenya: Effectiveness Of Community Mental Health Among Perinatal Women In Informal Settlements In Nairobi County</p>

	<p>*AO 311</p> <p>Sarah Lokaal, Turkana County Government, Health Department</p> <p>Bottlenecks and Opportunities in Strengthening Operational Efficiency and Data Interoperability for Primary Healthcare Service Delivery Models in Last Mile Populations In Turkana County, Kenya</p>	<p>*AO 206</p> <p>George Ngety, Amref Health Africa, Kenya</p> <p>Use of Peer-Led community groups in scaling up PrEP uptake among adolescents and young people: A case of Turkana County</p>	
		<p>*AO 251</p> <p>Abdalazim Merghani-KIT Royal Tropical Institute, Netherlands:</p> <p>Rethinking Primary Health Care in Sudan's Journey to Universal Health Coverage</p>	

Poster Presentations

Track 1.1

AP 139 : Benson Musau , Kenya

Family MUAC-Home based nutrition screening tool for identifying malnourished children in low literacy communities

AP50: Mercy Wafula, Kenya

Assessment of the impact of social behavior on the uptake of the Intermittent Preventive Treatment (IPTp-SP 3) among pregnant women in Hamisi Sub County.

AP127: Rehema Rashid, Kenya

Reaching Adolescents and Young People With SRHR Information In Religious institutions within Mombasa Specifically Kisauni And Nyali Constituency

79: Phelix Odhiambo Kenya

Equity of access to primary healthcare for vulnerable, General and Key populations in Suna East Migori County Kenya.

AP69: Silas Awuor, Kenya

Realist review of community coalitions and outreach interventions to increase access to primary care for vulnerable populations.

AP85: Ibrahim Iwingi, Kenya

HPV the silent infection

AP281: Sarah Kweyamba, Tanzania

The use of Client-Centered Approaches to improve COVID-19 vaccination coverage in Saving Lives and Livelihood Project in Tanzania

AP304: Zipporah Mwangi, Kenya

Empowering youth for health change: the impact of Kenya malaria youth corps in strengthening evidence-based community approaches to primary health care access.

Track 1.1

AP257: Purity Katheu, Kenya

Leveraging Community Engagement in Malaria Prevention and Control in Busia County, Kenya, July 2022

AP242: Brian Odenyo, Kenya

The Efficacy of Using Community Health Practitioners in Strengthening PHC Delivery: A COVID-19 Vaccination Case

AP247: Glenn Mwangi, Kenya

Empowering Youth to Combat Malaria: Evidence-Based Community Approaches for Lasting Health Change in Africa

AP199: Darkson Matchado, Malawi

Curbing preventable deaths through essential case management and prevention supplies during Cholera outbreak management: A case of Cholera response in Zomba by Amref Malawi.

AP91: Duncan Odhiambo, Kenya

Role of Mentor Mothers In Elimination of Mother-to-Child Transmission (EMTCT) of HIV/AIDs in Nyahera Sub County Hospital, Kisumu, Kenya.

AP43: Reinhard Bonke, Kenya

A community engagement model to ensure complete uptake of vaccine dosage in Serem Health unit

AP221: Khadija Badru, Kenya

Enhancing HIV/AIDS Management through Community Defaulter Tracing.

Track 1.2

AP121: Wilfred Gambo, Kenya

Reaching Adolescents and Young People with Family Planning Services in Religious Institutions within Kisauni and Nyali Constituencies in Mombasa County.

AP96: Victor Ruzibukya, Tanzania

Acceptance of Community ART Services and its contributing factors among PLHIV; An Exit Survey at Katoro HC in Geita, Tanzania.

AP239: Enzi Pascal, Kenya

Paediatric HIV Care, Treatment, and Monitoring: Current Strategies and Future Directions.

AP264: Mustafa Asman, Kenya

Building a Strong Primary Care Network: Evidence-Based Community Approaches and Quality Service Delivery. A case for Kilifi county

AP232: Emily Nyanumba, Kenya

Translation and adaptation of the stroke-specific quality of life scale into Swahili

AP168: Christine Muya, Kenya

Prevalence of individuals with traumatic spinal cord injury in Nairobi, Kenya.

Track 1.4

AP62: Risper Oyaa, Kenya

The transition from Paper Work to Electronic Community Health Information System (Echis) In Nyahera Community Health Unit- Nyahera Sub County Hospital, Kisumu Kenya

AP31: Joram Oisebe, Kenya

Strengthening multisectoral platforms to increase demand for COVID-19 vaccination in Nyaribari Masaba, Kisii county.

AP72; Fanuel Khainga, Kenya

Community Smearing Day In Prevention and Control Of Tungiasis, a Case Of Emanyinya Cu In Emuhaya Sub-county, Vihiga County

AP253: Sheila Kobia, Kenya

“Contact Tracing: For Early Tuberculosis Detection”

AP115: Judy Mboku, Kenya

Use of social accountability to advance Primary Health care through Gender Reproductive Equity.

AP 15: Wallace Karuguti, Kenya

Impact of an interprofessional education program on developing skilled graduates well-equipped to practise in rural and underserved areas

Track 1.2**AP36: Vincent Cheruiyot, Kenya**

From Targeted Outreach to Routine: Evaluating the Impact of COVID-19 Vaccination Outreach Campaigns and Their Implications for Sustainable Vaccination Programs.

AP98: Beatrice Kabugi, Kenya

Improving Pre-Exposure Prophylaxis (PrEP) Uptake among Adolescent Girls, Young Women, Pregnant, and Breastfeeding Women in Olenguruone Sub County Hospital

AP192: Young Samanyika, Malawi

Ensuring Universal Health Coverage in Emergency Situations: A Case of Emergency Response to Cyclone Idai/ Ana

AP97: Stella Kassone, Tanzania

Optimizing Healthcare Resources: Integrating COVID-19 Vaccine in Routine Immunization in Kilimanjaro Region - Tanzania.

Track 2.1**AP93: Muhammad Shuaib, Kenya**

Hedge on the path to 90-90-90: Qualitative analysis of barriers to engagement in HIV care among adolescents in Mombasa county in the context of test-and-treat.

AP259: Wangudi Lameck, Kenya

Fostering Resilience for Health Equity: Evidence-Based Insights on Social Determinants

AP26: Duncan Odhiambo

Ong'ayi, Kenya

Reaching the Unreached for Antinatal Profile Laboratory Tests in Kisumu West Sub County, Kisumu County, Kenya.

AP230: Susan Mshai, Kenya

Immunization defaulter tracing on Rotavirus vaccination for under 5 years children at Kisauni Dispensary, Frere town Ward- Nyali Sub-county.

AP23: Shally Mahmoud, Kenya

Achievement from gender non-conforming men (GNC men) and transgender women frontline workers offering HIV self-testing, assisted partner notification and health talk education services.

Day 2 - Thursday, 30th November 2023

Time	Activity
	Master of Ceremony: Prof George Ayodo
8:00 am - 8:30 am	Arrival, registration of delegates & entertainment
8:30 am - 8:45 am	Entertainment (Amref International University)
8.40 am-8.45 am	Video on the journey of PHC
8.45 am - 9.00 am	<p>Plenary 2: Primary Health Care Strategies for One Health and Climate Change</p> <p>Keynote Speaker</p> <ul style="list-style-type: none"> • Prof Trudie Lang, Founder, Global Health Network
9.00 am - 10.00 am	<p>Plenary 2 panel session: Primary Health Care Strategies for One Health and Climate Change</p> <p>Moderator: Peter Ofware, Country Director, HealthRight</p> <p>Panelists</p> <ul style="list-style-type: none"> • Mr Kay Kutschkau, Lead Knowledge Management & LactaHub, Family Larsson- Rosenquist Foundation • Mr Martin Muchangi, Director of Population Health & Environment, Amref Health Africa • Prof Matilu Mwau, Senior Principal Clinical Research Scientist, KEMRI • Dr Diana Onyango, Head of Technical Team, Farmafrica • Dr Ambrose Kipyegon, Africa One Health University Network
10:00 am - 10:30 am	Networking Tea-Break / Poster Presentations

<p>10.30 am- 12.00 pm</p>	<p>Venue: AG 1</p> <p>Track 2.3: Education</p> <p>Chair: Dr Josephat Nyagero, AMIU Co-chair: Yvonne Opanga, Amref Facilitator: Nobert Bouret</p>	<p>Venue: AF 1.1</p> <p>Track 3.1:</p> <p>Adolescents & Sexual Reproductive Health Chair: Nelly Munyasia, RHNK Co-chair: Dr Micah Matiangi, AMIU Facilitator: Philip Soita</p>	<p>Venue: AF 2.1</p> <p>Track 3.2: Maternal, Child Health & Nutrition</p> <p>Chair: Dr Peninah Masibo, UCSF Co-chair: Wycliffe Ogenya Facilitator: Valary Jerop</p>
	<p>*AO 146</p> <p>Gilbert Sigei- Amref international university, Kenya: Predictors of Effective Preceptorship among nurses in clinical teaching at Tenwek hospital, Bomet, Kenya</p>	<p>*AO 49</p> <p>Dennis Menya-Catholic Medical, Kenya: Diversifying Health Talk: Engagement of External Non-Clinical Facilitators to Bridge Health Education Gaps Among Adolescents and Young People Living with HIV (AYPLHIVs) in Siaya, Kenya.</p>	<p>*AO 104</p> <p>Joseph Mukamba- Pwani University, Kenya: Trends in caesarean section deliveries at Kilifi County Hospital, 2016-2019</p>
	<p>*AO 52</p> <p>Cherop Sam Mawa- Amref Health Africa in Uganda: Community curriculum-based learning in providing Sexual Reproductive Health and Rights (SRHR) information for uptake of Sexual Reproductive Health (SRH)-Family planning services.</p>	<p>*AO 213</p> <p>Marriam Mangochi - Amref Health Africa, Malawi: Addressing High Rates of Adolescent Pregnancies Through Integrated Local Level Multi-Sectoral Response: A Case of USAID Momentum Tikweze Umoyo Project in Malawi</p>	<p>*AO 173</p> <p>Abdullahi Ahmed-AMIU, Somalia Factors influencing utilization of antenatal care services in Garowe, Puntland state of Somalia</p>
	<p>*AO 312</p> <p>Mat Lowe-Society for the Study of Women's Health (SSWH), Gambia: Applying an intersectional lens towards social determinants of maternal health in The Gambia: Insights from the SIMAH Project</p>	<p>*AO 223</p> <p>Oscar Mahinyila- University of Dar es Salaam-Mbeya College of Health and Allied Science (UDSM-MCHAS), Tanzania: Knowledge and practices on the prevention of sexually transmitted infections among college students in Mbozi district - Mbeya, Tanzania</p>	<p>*AO 94</p> <p>Micah June-Jaramogi Oginga Odinga University of Science and Technology, Bondo, Kenya: Factors associated with exclusive breastfeeding interruption and linear growth in a comprehensive support setting in Homa Bay County</p>

<p style="text-align: center;">*AO 222</p> <p>Moses Sadia- Jaramogi Oginga Odinga University of Science and Technology: Awareness of the Spectrum Condition of Autism Among Pre-primary School Teachers in Western Kenya</p>	<p style="text-align: center;">*AO 74</p> <p>John Okere-, HealthRight, Kenya: DESIP: Increasing Access to Family Planning for the Marginalized Population in Kenya's Low Contraceptive Prevalence Counties</p>	<p style="text-align: center;">*AO 17</p> <p>Brenda Mubita- Amref Health Africa, Zambia: Fighting Maternal Mortality through Respectful Maternity Care and Good Customer Care</p>
<p style="text-align: center;">*AO 186</p> <p>Prof Joachim Osur-Amref International University, Kenya Factors associated with sexual dysfunctions in Nairobi, Kenya</p>	<p style="text-align: center;">*AO 81</p> <p>Hildah Essendi-Triggerise, Kenya: Layering mental health screening and treatment on HIV prevention, care and treatment improves access to ART and PrEP among adolescents and young adults (15-24 years)</p>	<p style="text-align: center;">*AO 240</p> <p>Lidya Yohannes- MOH, Ethiopia: Assessment on the Rational Use of Antimalarial Drugs in Health Facilities of Ethiopia, Cross-Sectional Study”</p>
<p style="text-align: center;">*AO 112</p> <p>Kouemo Motse Dorgelesse Francine Antoinette- University of Buea, Cameroon: Mycobacterium drug resistance and antimycobacterial potentials of selected medicinal plants</p>	<p style="text-align: center;">*AO 89</p> <p>Miftah Yasin- Samara University, Ethiopia: Reproductive Health Services Utilization and associated factors among youths in Kemmise Town, Northeast Ethiopia</p>	<p style="text-align: center;">*AO 5</p> <p>Ezekiel Chepkuyeng-Amref International University, Kenya: Behavioral and Social Predictors of Malaria Vaccine Uptake and Hesitancy Among Eligible Children and Their Caregivers in Bumula Sub-county, Bungoma County</p>
<p style="text-align: center;">*AO 203</p> <p>Pauline Nyokabi- Tharaka Nithi County Government: Leveraging on school health program in promotion of utilization of primary health care services - Jiinue initiative office of County First lady</p>	<p style="text-align: center;">*AO 193</p> <p>Joy Ndarathi- Impact 4 Youth, Kenya: Myths Associated with Family Planning among Young Girls: A Case Study of Kisauni Dispensary in Mombasa County</p>	<p style="text-align: center;">*AO 162</p> <p>North Coast Medical Training College Dennis Songa Health for all: NCMTTC at the core in availing Primary Health Care Services to the Communities</p> <hr/> <p style="text-align: center;">*AO 302</p> <p>Vincent Opinya, International Rescue Committee, Turkana, Kenya: Integrating child health and nutrition service delivery in primary health care facilities within refugee settings in Kakuma refugee camp</p>

12:00 am- 1:30 pm	<p>*AO 53</p> <p>Hauron Wambua, Kenya: Level of social support given to injured soccer players in Eswatini.</p>		<p>*AO 182</p> <p>Fred Mboya- University of Nairobi, Kenya: Prevalence of and Factors associated with exclusive breastfeeding among young mothers at the Maternal and Child Health clinic at Mbagathi County Hospital</p>
	<p>Venue: AG 1</p> <p>Track 3.3 : Mental Health & Gender-based Violence</p> <p>Chair: Prof Tamary-AMIU Co-chair: Health Right Facilitator: Dr.Mitchel Mutabazi</p>	<p>Venue: AF 1.1</p> <p>Track 3.4: NCDs</p> <p>Chair: Dr Shiphrah Kuria Co-chair: Dr Dan Onguru, JOOUST Facilitator: Lina Mwita</p>	<p>Venue: AF2.1</p> <p>Track 3.5: Wash, NTDs, CD</p> <p>Chair: Dr Desalegen Dekele Co-Chair: Samuel Muhula Facilitator: Valary Jerop</p>
	<p>*AO 137</p> <p>James Chrispin-Weill Bugando School of Medicine, Catholic University of Health and Allied Sciences, Tanzania: Prevalence, pattern, and predictors of cardiovascular event in people living with HIV attending clinic and admitted at tertiary hospital in Mwanza region, Tanzania</p>	<p>*AO 189</p> <p>Bilton Sore-Nairobi Hospital, Kenya: Prevalence and Risk Factors of Neck Pain among the Hospital Front and Back Office Workers at the Nairobi Hospital, Kenya</p>	<p>*AO 87</p> <p>Josephine Orare- Amref International University, Kenya: Menstrual Health Practices among Physically Disabled Women and Girls in Masaba North Sub-County, Nyamira County, Kenya</p>
	<p>*AO 76</p> <p>Josephine Nabwesi- Uganda Christian University, Uganda: Pregnant Women's Knowledge, Attitude, and Practice Towards the Attendance of Antenatal Care Services at Mukono General Hospital</p>	<p>*AO 99</p> <p>Adugna Getahun-Hawassa University Comprehensive Specialized Hospital Ethiopia: Time to adjuvant chemotherapy and its predictors among postoperative breast cancer patients at cancer treatment center of Hawassa University Comprehensive Specialized Hospital, Hawassa, Ethiopia 2022</p>	<p>*AO 234</p> <p>Alphaxad Waluse- Amref Health Africa, Tanzania, Tanzania: Enhancing COVID-19 vaccine uptake. The transformative impact of a house-to-house approach in Tanga region, Tanzania.</p>

<p style="text-align: center;">*AO 269</p> <p>Mary Kemunto- NI, Kenya: Quality rights; Unlocked access and utilization of community-based Mental Health services by people living with Mental health conditions in Isiolo County: community scorecard</p>	<p style="text-align: center;">*AO 101</p> <p>Rashid Gose- Muhimbili University of Health and Allied Sciences, Tanzania: The lived experiences and caring needs of women diagnosed with cervical cancer: A qualitative study in Dar es Salaam, Tanzania.</p>	<p style="text-align: center;">*AO 25</p> <p>Dr. Francis Makokha - Ministry of Health Machakos County and Referral Hospital, Kenya: Pre-Exposure Prophylaxis adherence and its determinants among HIV negative partners in discordant relationships seeking care in Machakos county hospitals</p>
<p style="text-align: center;">*AO 65</p> <p>Leslie Rono- MIDRIFT HURINET, Kenya: Increased access to Mental Health and Psychosocial Support services through provision of WHO's Problem Management Plus by Community Health Promoters in Nakuru County-Kenya</p>	<p style="text-align: center;">*AO 226</p> <p>Zachariah Muriuki- MOH Kenya: Feasibility of OptiBP Application for Home Blood Pressure Monitoring among People Living with Hypertension in Rwanda</p>	<p style="text-align: center;">*AO 174</p> <p>Desalegn Bekele Tessema- Amref Health Africa, Ethiopia: Menstrual Hygiene Management as a Business to Ensure Accessibility of Menstrual Hygiene Products in Schools</p>
<p style="text-align: center;">*AO 190</p> <p>Nancy Gathi- UoN, Kenya: Health Seeking Behavior of Community Health Volunteers working Closely with survivors of Gender Based Violence in Relation to Burnout and Vicarious Trauma in Informal Settlements</p>	<p style="text-align: center;">*AO 224</p> <p>Irene Bwosi- MOH, Kenya: Health Kiosks in Markets (HEKIMA); Strengthening Primary Care System for Prevention and Control of Cardiovascular Diseases in Vihiga County, Kenya</p>	<p style="text-align: center;">*AO 278</p> <p>NGIGI EVALINE NJOKI- University of Nairobi, Kenya: The Burden, Clinical Presentation and Clinical Outcome of COVID-19 Among Children Under 13 Years Admitted at Kenyatta National Hospital Between September 2020 and August 2022</p>
<p style="text-align: center;">*AO 12</p> <p>Lordlaro Lidoros- Maseno University, Kenya: Enhancing Mental health accessibility and Continuity of care</p>	<p style="text-align: center;">*AO 229</p> <p>James Murray- Amref Health Africa, UK: A comprehensive approach to tackling obstetric fistula: lessons from Uganda and Tanzania</p>	<p style="text-align: center;">*AO 68</p> <p>Silas Awuor-Microbiology lab, Jaramogi Oginga Odinga. Hospital, Kenya: What makes community health worker models for tuberculosis case finding work? A cross-sectional study of TB to identify success factors for increasing case notifications</p>

	<p>*AO 154</p> <p>Rose Betty Mukii- AHA, Kenya: Association between timely reporting of Sexual Gender-Based Violence and uptake of Emergency Contraceptives in Turkana County: A Retrospective Study</p>	<p>*AO 7</p> <p>Caroline Nyandat- KMET, Kenya: Community Approaches for early screening and referrals for breast cancer treatments. Case of Test and Treat Intervention in Nyamira County- Kenya</p>	<p>*AO 204</p> <p>George Ng’ety, AHA Kenya: Retention of Men who have Sex with Men on prevention intervention in a highly stigmatized nomadic community. A case of Lodwar town, Turkana County</p>
	<p>*AO 45</p> <p>Stephen Ombija- Amref International University, Kenya: Factors Associated with Recent Intimate Partner Violence in Kibra Informal Settlements; A Cross-Sectional Study, 2023</p>	<p>*AO 152</p> <p>Abraham Ochum- AMIU, Kenya: Clinical Outcomes Associated with Delayed Rehabilitation of Patients Hospitalized With Total Hip Replacement At Selected Hospitals In Nairobi County</p>	
	<p>*AO 66</p> <p>David Nieuwe Weme- ARQ, Netherlands: Mental health and structural injustice: a qualitative investigation of interlocking patterns of disadvantage among displaced populations in Nairobi, Kenya’</p>	<p>*AO 172</p> <p>Tiffany Wanjiru, Amref International University Factors Affecting the Utilization of Breast Cancer Screening Services: A Case of Kikuyu Town</p>	
		<p>*AO 138</p> <p>Prossy Nanatale Nabatte -AMIU, Uganda: The significance of Human Papillomavirus detection among women living with HIV attending antiretroviral therapy clinic in Mukono, Uganda</p>	

1.30 pm-
2.30 pm

Lunch/ Poster Presentations/Networking

<p>2.30 pm- 4.00 pm</p>	<p>Venue: AG 1</p> <p>Panel Discussion 4: Implementation research by Africa Population and Health Research Centre (APHRC)</p> <p>Chair: Dr Fred Wekesa Facilitator: Dr. Faith Muhonja</p>	<p>Venue: AF1.1</p> <p>Panel Discussion 5: Addressing social determinants of health through community-based initiatives by the International Centre for Research on Women (ICRW)</p> <p>Chair: Evelyne Opondo Facilitator: Peter Soita</p>	<p>Venue: AF 1.2</p> <p>Panel Discussion 6: The role of integration in converging vertical programs with primary care by Centre for Health Solutions - Kenya (CHS)</p> <p>Chair: Dr Lorraine Mugambi-Nyamboga Facilitator: Lina Mwita</p>	<p>Venue: AF 2.1</p> <p>Panel Discussion 7: Understanding health and health-seeking behaviours at the intersection of prolonged displacement among refugees in Nairobi, Kakuma and Kalobeyei by AMIU/ARQ/IRC</p> <p>Chair: David Nieuwe Weme Facilitator: Evelyne Muinga</p>
<p>4.00 pm- 4.15 pm</p> <p style="text-align: center;">Networking Tea-Break/ Poster Presentations</p>				
	<p>Venue: AF 1.1</p> <p>Panel Discussion 8: Digital Innovations in PHC by Amref International University (Tekeleza Project)</p> <p>Chair: Priscilla Ngunju/Dr Micah Matiang’i Facilitator: Christine Muya</p>	<p>Venue: AF2.1</p> <p>Panel Discussion 9: The role of global SRHR commitments in the realization of PHC by Reproductive Health Network, Kenya</p> <p>Chair: Nelly Munyasia Facilitator: Timothy Sato</p>		
<p>5.45 pm- 6.30 pm</p>	<p style="text-align: center;">Venue AG1: Launch of 1000 Research Challenge Lead: Prof Trudie Lang, Founder, Global Health Network</p>			

Poster Presentations

Track 2.2

AP299: Faith Nkabai, Kenya

Empowering Communities for Malaria Control: Evidence-Based Strategies in Strengthening Primary Healthcare a Case of Kenya Malaria Youth Corps.

AP106: Jonathan Ajuma, Nigeria

Health Equity in Hard-to-Reach Communities in Nigeria's Abia State: An Asset-Based Community Development Intervention to Influence Community Norms and Address Social Determinants of Health

AP92: Steve Mazitsa, Kenya

Right to Health of Transgender People Living with HIV In Nairobi Kenya

AP159: George Oyucho Kenya

Social Determinants of Health: A Case Study on Livelihoods and Health Outcomes at Migori County Referral Hospital.

AP254: Philip Opere, Kenya

Uptake of COVID-19 vaccine among persons living with HIV on antiretroviral Therapy, Siaya County, Kenya.
AP18: Pauline Omutere, Kenya
Housing as a social determinant of health.

AP136: Zilpher Audo Kenya

Widows Economic Challenges contribute to their delay in Accessing Primary Health Care Services

AP233: David Ongiri, Kenya

Improving Adolescent Sexual and Reproductive Health Outcomes Through Life and Vocational Skills Enhancement; Lessons from The Binti Shupavu Project - Homabay County.

AP13: Lordlaro Lidoros, Kenya

Strengthening advocacy to reduce frequent uptake of Emergency Contraception Pills (ecps) among students in higher learning institutions.

AP114: Tanya Tabi, Cameroon

Give A Girl A Hand, Stop Survival Sex and Reduce School Absenteeism

Track 3.2

AP300: Godfred Amany, Kenya

Motorcycle ambulance transport saving the lives of pregnant mothers and children in Turkana South.

AP266: Raymond Muhanji, Kenya

Effect of Introducing Mobile and digital health innovations on maternal and child health outcomes among women of reproductive age (15-49) in Kakamega, Kenya

AP27: Steven Kituyi, Kenya

Utilisation of antenatal and postnatal group to promote identification and retention of clients seeking MNH services; Case of Bondeni HC, Saboti, Trans Nzoia County, Kenya

AP84: Evance Ogola, Kenya

Monitoring Maternal and Neonatal Emergency Navigation Triage on Mfangano (momentum): Community-based Study evaluating delays in access to Maternal and Newborn Emergency on Mfangano Island, Kenya

AP307: Josiane Ngouanfo,

Cameroon:

Prevalence and factors associated with Postpartum Post Traumatic Stress Disorder at the Bamenda Regional Hospital, Cameroon.

AP108: Kevin Onyango, Kenya

Support Supervision Booklet Approach: A Case of Migori County Health Programs Adoption, Implementation and Sustainability.

AP83: Evance Ogola, Kenya

Health Navigation Program: A Community Health Intervention to Expand Access to Emergency Care and Promote Safe Deliveries in Rural Kenya

Track 3.3.

AP105: Duncan kisilu, Kenya

The Impact of Youth-Friendly Space on Mental Health

AP255: Daisy Maiyo, Kenya

The effect of integrating standardized mental health screening tools into routine primary health care assessments

AP248: Brenda Wanjir, Kenya

Revolutionizing Community Well-Being: Evidence-Based Strategies for Mental Health, Gender Equality, and Violence Prevention in Primary Health Care

AP188: Moline Atieno, Kenya

The burden of mental health and gender-based violence among men in Chulaimbo Hospital Kisumu County, Kenya.

Track 2.3

AP237: Odhiambo Ondielo, Kenya

Factors Influencing Uptake of Cervical Cancer Screening among Female Students at Pwani University

AP04: Brian Kipkoech, Kenya

Inclusion of Person-Centred Care in Kenyan Undergraduate Nursing Training-A Documentary Analysis of Moi University School of Nursing Curriculum

AP176: Neville Okwaro, Kenya

Menstrual Hygiene Management Barriers and Enablers in Western Kenya: Assessment by USAID-Funded Western Kenya Sanitation Project

AP202: Knight Kalekye, Kenya

Factors Influencing Social Determinants of Health among Youths Between 21 to 35 Years Living in Makadara in Nairobi, Kenya.

AP109: Damilola Oni, Vietnam

IoT-Enabled Healthcare Systems in Africa: Improving Security and Privacy Through Machine Learning And Ethical Considerations

Track 3.1

AP73: John Ndungu, Kenya

Adolescents and Young People Teen Mothers Program Success at Rachuonyo District Hospital, Homabay County 2023.

AP233: David Ongiri, Kenya

Improving Adolescent Sexual and Reproductive Health Outcomes Through Life and Vocational Skills Enhancement; Lessons from The Binti Shupavu Project - Homabay County.

AP288: Dancun Taremwa, Uganda

System Strengthening To Enable Good Accessibility and Utilization of Immunization Services at Mugarustya HC II, Mbarara District

AP160: Purity Nthenya, Kenya

Mama Toto Care Initiative in Jomvu Sub-County by Community Health Services Team

AP19: Brenda Mubita, Zambia

Mutual Accountability in the Fight Against Maternal Mortality

AP131: Leah Kusah Anzani, Kenya

A Case of Vyemani Community Health Unit- Effective Community to Facility Linkage of Family Planning and Cervical Cancer Screening.

AP37: Evelyne Muinga, Kenya

Relationship Between Intake of Energy-Dense Diets and Nutritional Status of Adolescents in Primary Schools In Nairobi City County, Kenya

AP70: Silas Awuor, Kenya

Discrimination and Other Barriers to Accessing Health Care: Viewpoints of HIV positive adolescent with Mild and Moderate Intellectual Disability and their Cares

AP279: Omondi Hannington, Kenya

Investigating the Prevalence and Determinants of Malnutrition among <5 Children in Korogocho Slum, Nairobi.

Track 3.4

AP267: Raymond Muhanji, Kenya

Strengthening health systems to improve health outcomes around NCDs at Primary Healthcare Level in Meru County

AP227: Mamu Athman, Kenya

Ganahola Community Health Unit Engagement with Mikindani Mcm Link Facility To Ensure Increased Cervical Cancer Screening Services For The Community.

AP308: Winnie Odhiambo, Kenya

Impact of Intensified Cervical Cancer Screening Towards Scaling Up Early Detection and Initiation of Early Treatment Interventions at Nyahera Sub County Hospital

AP158: Ibrahima Gueye, Senegal

The innovative approach to decentralized diabetes prevention and management

Track 3.5

AP30: Bekele Tessema, Ethiopia

Menstrual Hygiene Management (MHM) in Industries and Workplaces: A Qualitative Evidence from Industries and Sector Offices in Addis Ababa City and Adama Town, Ethiopia Desalegn

AP128: Rozilla Adhiambo, Kenya

Working with Faith leaders to promote community health and wellbeing

<p>AP211: Lucy Ngemu, Kenya Stakeholders' Involvement in Upscaling Menstrual Hygiene Through Sanitary Pads Distribution to Adolescent Girls in Jomvu Kuu Ward, Jomvu Sub-County.</p> <p>AP155: Madalitso Tolani, Malawi Sports - A Platform for Captive and Motivated Dialogue for Adolescents SRHR Knowledge Acquisition and Service Uptake</p> <p>AP228: Ruth Okoth, Kenya Understanding Barriers To Adolescence Access And Utilization Of Sexual Reproductive Health Services In Ugunja Sub County, Siaya -Kenya</p>	<p>AP57: Anjellah Jumah, Kenya Chamas a community-based hybrid strategy of peer support in pregnancy and infancy in Western Kenya.</p> <p>AP161: Margaret Mburu, Kenya Dietary practices, physical activity, and overnutrition among school-going children aged 8 - 11 years in Thika, Kenya, May 2023</p> <p>AP14: Lince Mwaizi, Kenya Effective Use Of Short Message Service SMS to Improve Maternal, Child and Nutrition Among Pregnant Mothers at Kimwenge Dispensary</p>	<p>AP261: Karen Kamau, Kenya Enhancing Healthcare for Neglected Tropical Diseases through Primary Health Care Principles in Kwale County, Kenya.</p> <p>AP08: Obino Tai, Kenya Assessment of Households infected by tungiasis to understand the linkage, Case study of Makuchi sub-location, Hamisi Sub-county, Vihiga County Kenya</p> <p>AP286: Michael Kimani, Kenya The Impact of Youth-County Partnerships in the Fight Against Neglected Tropical Diseases (ntds) in Kenyan Counties of the Endemic Regions.</p>
--	--	---

Day 3 - Friday, 1st December 2023

Time	Activity
	Master of Ceremony: Mr Peter Ofware, Country Director Health Right, Kenya
8:00 am - 8:30 am	Arrival and registration
8:30 am - 8:45 am	Entertainment (Amref International University)
8.45 am-9.00 am	<p>Plenary 3: Progress, Challenges, and Opportunities in HIV/AIDS and Future Pandemics</p> <p>Keynote Speaker</p> <ul style="list-style-type: none"> • Keynote Address: Dr Amos Kibisu, UNAIDS
9.00 am - 10.00 am	<p>Plenary 3 panel session: Progress, challenges, and Opportunities in HIV/AIDS and future pandemics</p> <p>Moderator:</p> <p>Panelists</p> <ul style="list-style-type: none"> • Dr Bernard Olayo, World Bank/CPHD • Prof Serigne Magueye, President, African Society of Sexual Medicine • Mr Jyoti Tewari, UNFPA • Dr Rose Wafula, Head, NASCOP • Dr Irene Muchoki, Chief Officer of Health, Nairobi County • Dr Willis Omwoyo, Council Member, JOOUST
10.00 am - 10.30 am	Networking Tea-Break / Poster Presentations

<p>10.30 am-12.00 pm</p>	<p>Venue: AF1.1</p> <p>Track 4.1: Improving PHC in the face of climate change; maintaining health system resilience.</p> <p>Chair: Dr Alice Lakati, AMIU</p> <p>Co-chair: Madaliso Tolani</p>	<p>Venue: AF 1.2</p> <p>Track 4.2: Zoonoses and evidence on the one Health approach</p> <p>Chair: Dr Diana Onyango, Farmafrica</p> <p>Co-chair: Dr Daniel Onguru, JOOUST</p> <p>Facilitator: Eddie Machache</p>	<p>Venue: AF 2.1</p> <p>Track 4.3 Use of technology to improve communities' access to Primary Healthcare</p> <p>Chair: Prof George Ayodo, JOOUST</p> <p>Co-chair: Dr Faith Muhonja, AMIU</p> <p>Facilitator: Christine Muya</p>	<p>10.30 am-1.30 pm</p> <p>Venue AG 1</p> <p>African Society for Sexual Medicine Sexual and Reproductive Health and Rights</p> <p>Concurrent Session: ASSM, UNFPA, NAYA, The Girl Generation</p> <p>Chair: Prof Serigne Magueye</p> <p>Facilitator: Peter Soita</p>
<p>*AO 107</p> <p>Juliet Shaibu-University of Ibadan, Nigeria: Efficacy of Activated Carbon for Ammonia Gas Reduction in Selected Poultry Farms in Ido Local Government Area, Ibadan, Oyo State, Nigeria</p>		<p>*AO 145</p> <p>Julius Rosenhan- D-Tree-Tanzania: Reaching Zanzibar's children with disabilities: A digitally supported community health initiative delivering disability-focused early childhood development services</p>		<p>*AO 194</p> <p>Mariah Ngutu-- University of Nairobi, Kenya: Healthcare provider perceptions on technology-driven interventions at primary healthcare level: Learnings from the Kenya TIMCI project implementation</p>
<p>*AO 120</p> <p>Charles Muruka: Environmental Public Health Association of Kenya: Compliance of Kenyan Counties with the Sustainable Waste Management Act of 2022: A Case of Five Counties.</p>		<p>*AO 38</p> <p>Risper Oyaa-Kisumu County, Kenya: Impact of CHVs motivation on deliveries and other services at Nyahera sub-county hospital, Kisumu County, Kenya</p>		<p>*AO 46</p> <p>Brenda Metobo-Amref International University, Kenya: Health Service Provider Perceptions on Refugee Health Care Financing In Kenya</p>
<p>*AO 273</p> <p>Muhsin Sheriff- Centres for Health and Education Programmes, Kenya: Building resilience to combat climate change effects on lifestyle and health among impoverished communities in semi-arid Chakama location, Kilifi County</p>		<p>*AO 117</p> <p>Julie Nyanchama Nyamao- University of Nairobi, Kenya: Consensus Building for Community-Based Intervention for Women Following Obstetric Fistula Treatment</p>		<p>*AO 277</p> <p>Caroline Kendi - Center for Public Health and Development, Kenya: An Exploratory Study to Monitor Power, Biomedical Equipment Utilization, Location, and Barriers to Care in Oxygen Equipment in Kakamega Kenya, 2022-2023</p>

<p style="text-align: center;">*AO 122</p> <p>Kevin Wachira- BHESP, Kenya: Aligning Practice to evidence in Strengthening PHC for lasting Health Change in Africa</p>	<p style="text-align: center;">*AO 252</p> <p>Susan Cheruiyot- Aga-Khan University-Kenya: Re-imagining nutrition education for pregnant adolescents in the face of climate change: A COPC approach</p>	<p style="text-align: center;">*AO 134</p> <p>Felix Mandela Akoyo- MoH, Vihiga County Government : Assessment of the Effect of Outreach on Uptake of Pentavalent3 as Community Approach Model that Strengthens Equitable Access to Primary Healthcare Services in Vihiga Sub County</p>
<p style="text-align: center;">*AO 44</p> <p>Doris Ngassa- Amref International University, Kenya: Prevalence of Staphylococcus aureus in bovine raw milk and associated milking hygiene practices among small-scale farmers in Magu district, Mwanza Tanzania</p>	<p style="text-align: center;">*AO 260</p> <p>Byrone Wayodi- Ripple Effect-Kenya: Ripple Effect Kenya Community-Based Health Insurance Model</p>	<p style="text-align: center;">*AO 241</p> <p>Dr Yared Alemu-AYA-Innovation- Ethiopia: Developing AI-Enabled Digital Mental Healthcare to Improve Treatment Outcomes</p>
<p style="text-align: center;">*AO 200</p> <p>Erik Murimi, M, Sc, Africa One Health University Network, Kenya: The Antimicrobial Resistance Profile of Staphylococcus aureus in Milk in Kenya: A Systematic Review</p>	<p style="text-align: center;">*AO 301</p> <p>Monthe Sila-IRC: Sustaining Safe Motherhood Practices among women refugees through a community-based model in Kakuma refugee camp.</p>	<p style="text-align: center;">*AO 119</p> <p>Veronica Njambi- Pharmaceutical Society of Kenya, Kenya: Expanding access to Family Planning through community pharmacies</p>
<p style="text-align: center;">*AO 10</p> <p>Obino Tai- Vihiga County Dep. Health : Evaluation Of Upper Respiratory Tract Infection Management to Understand the Drivers of Antimicrobial Resistance Amongst Kitagwa And Tigoi Community Unit Residents, Vihiga County</p>	<p style="text-align: center;">*AO 169</p> <p>Dancun Ngwara, MOH, Kenya: Village Mop up of Missed Opportunities for Immunization</p>	<p style="text-align: center;">*AO 196</p> <p>Elvis Mwinyi- Impact 4 Youth Kenya, Kenya: Embracing Diversity and Fostering Inclusion for Adolescents and Young People’s Sexual and Reproductive Health and Rights: A Case of Kisauni Dispensary, Mombasa County</p>

<p>12.00 pm- 1.30 pm</p>	<p>Venue: AF1.1</p> <p>Track 4.4: New evidence on the management of infectious diseases including environmental drivers of antimicrobial resistance.</p> <p>Chair: Prof Ayodo</p> <p>Co-chair: Dr Clarice Ambale, CHS</p> <p>Facilitator: Eddie Machache</p>	<p>Venue: AF 1.2</p> <p>Track 5.1: Role of citizens' voices in improving access to PHC services</p> <p>Chair: Mr Peter Ofware, Healthright</p> <p>Co-chair: Dr Catherine Wambua, WB</p> <p>Facilitator: Dr Michel Mutabazi</p>	<p>Venue: AF 2.1</p> <p>Track 5.2: Effective health leadership and governance approaches and Practices</p> <p>Chair: Sr. Dr Margaret Nyongesa</p> <p>Co-chair: Dr Dancan Irungu</p> <p>Facilitator: Lina Mwita</p>
	<p>*AO 280</p> <p>Kelvin Kaloki-LVCT Health-Kenya: Integrated Community-Based Approaches to Accelerate COVID-19 Vaccination Uptake</p>	<p>*AO 198</p> <p>Young Samanyika- Amref Health Africa, Malawi: Community-Based Management (CMB) of WASH facilities; sure, way of attaining Lasting Health Change in Malawi</p>	<p>*AO 310</p> <p>Mark Mwanja - Amref Health Africa, Kenya: One size does not fit all: Paradigm shift in Primary Healthcare Governance and Policy Frameworks for differentiated contexts in Kenya</p>
	<p>*AO 305</p> <p>Sila Monthe- IRC-Kenya: Sustaining safe motherhood practices among women refugees through a community-based model in Kakuma refugee camp</p>	<p>*AO 63</p> <p>Rawiyah Aboud- Amref International University, Kenya: The Decision-Making Process in Reporting Sexual Violence among Somali Refugee Women in Nairobi, Kenya</p>	<p>*AO 183</p> <p>David Nyajowi- USAID Western Kenya Sanitation Project, Kenya: Effective Coordination of Market-based Menstrual Hygiene Management through Established County-led Steering Committees: Intervention by USAID-funded Western Kenya Sanitation Project</p>
	<p>*AO 287</p> <p>Cynthia Wailula- UHC Lab, AMREF: Strengthening PHC Workforce Financing for Health Equity: Insights from Kenya, Zambia, and South Sudan</p>	<p>*AO 258</p> <p>Malkia Abuga- Nairobi County Government, Kenya: Potential of Community Scorecard in Ensuring Accountability in Nairobi County, Kenya</p>	<p>*AO 291</p> <p>Anke van der Kwaak- KIT Royal Tropical Institute, Netherlands: Community Life Centers in Kenya and South Africa as an innovative model for primary health care; from co-creation to governance and leadership</p>

<p style="text-align: center;">*AO 135</p> <p>TIMINAH Gwasima- Vihiga County Referral Hospital: Universal Health Coverage by progressively facilitating access to services by all</p>	<p style="text-align: center;">*AO 244</p> <p>John Mwangi- Kenya Malaria Youth Corps, Kenya: Amplifying Citizen Voices to Enhance Access to Primary Healthcare Services: A Case Study of the Kenya Malaria Youth Corps</p>	<p style="text-align: center;">*AO 290</p> <p>Cynthia Waliaula- Amref Health Africa Headquarters, Kenya: Revolutionising Primary Healthcare: Accelerating Policy Reforms through Cross-Country Learning Initiatives</p>
<p style="text-align: center;">*AO 35</p> <p>Kizito Mukhwana- Goldstar Kenya: Enhanced uptake of ANC services in early gestation through community-Adopted Pregnancy Screening Tools, Mapping, and Referral in Nakuru County</p>	<p style="text-align: center;">*AO 181</p> <p>Leah Ogada- Triggerise, Kenya: The role of service satisfaction in promoting continuation of Short Acting Method Usage Amongst Adolescent Girls and Young Women (AGYW)</p>	<p style="text-align: center;">*AO 147</p> <p>Julian Nyamupachitu- ReAct Africa, Kenya: Mobilizing youth in Africa for action on Antimicrobial Resistance through a Leadership Program</p>
<p style="text-align: center;">*AO 284</p> <p>Samira Nassir, German Doctors: Integrating Nutrition and Pediatric Clinics to Increase Childhood Tuberculosis Diagnosis in Mathare Slums; A Case Of German Doctors Baraka Health Center In Nairobi Kenya</p>	<p style="text-align: center;">*AO 58</p> <p>Dalmas Onyango- Witu Community Development Platform, Kenya: Community-Led monitoring Intervention to Improve access and Accountability in provision of Primary Health Care services for people living with HIV (PLHIV) in Lamu County</p>	<p style="text-align: center;">*AO 78</p> <p>Reinhard Bonnke- MOH, Kenya: CHPs pamoja twaweza</p>
<p style="text-align: center;">*AO 41</p> <p>Zewdneh Shewamene- Amref-Ethiopia: Maternal healthcare at the newly established comprehensive health posts in pastoral settings of Ethiopia: Care experiences and perceptions of mothers and providers</p>	<p style="text-align: center;">*AO 298</p> <p>Brian Okada Amref Health Africa in Kenya- Ethics and Scientific Review Committee, Kenya: Scope and Ethical Issues from Primary Health Care Research Studies reviewed and approved by the Amref Ethics and Scientific Review Committee (ESRC)</p>	<p style="text-align: center;">*AO 292</p> <p>Salome Sijenyi- AMPATH, Kenya: Hospitals are medicine and more....? An assessment of subsidized health insurance beneficiaries' experience in Western Kenya</p> <hr/> <p style="text-align: center;">AO 40</p> <p>Temesgen Ayehu-MOH Ethiopia: Assessment of the governance system of the Ethiopian Primary Health Care System at National and sub-national Levels</p>

<p>1.30 pm - 2.30 pm</p>	<p style="text-align: center;">LUNCH/ Poster Presentations</p>
<p>2.30 pm- 2.45 pm</p>	<p>Closing Plenary 4</p>
	<p>Awards and Launches</p> <p>Awards:</p> <ul style="list-style-type: none"> • Hackathon: Dr Dancan Irungu, Lead- Entrepreneurship and Dean, Graduate School • Best Student, Most disruptive, Most entrepreneurial oral/poster presenters, Prof George Ayodo, JOOUST <p>Launches</p> <ul style="list-style-type: none"> • Journal of Primary Health Care: Prof Serigne Magueye, President, African Society of Sexual Medicine • Primary Health Care Centre of Excellence: Prof Dennis Wilms, McMaster University, Canada <p>Summary Report of the 1st Primary Health Care Congress: Dr Josephat Nyagero, Dean of Students</p> <p>Announcements</p> <p>Vote of thanks: Dr Alice Lakati, Director, Research and Community Extension</p> <p>Official closure: Prof Joachim Osur, Vice Chancellor</p> <p>Departure</p>

Poster Presentations

Track 4.1

AP256: Maweu Kimondiu, Kenya

Combating Climate Change: Championing Malaria Social Behaviour Change Sensitization in Schools in Machakos County, Kenya

AP274: Nyamolo Vincent, Kenya

The struggle of rural areas in maintaining PHC resilience in the wake of climate change: Is there hope?

Track 4.3

AP75: Njige, Tanzania

My Medics software application Paul

Track 4.4

AP88: Catherine Bunga, Tanzania

Trust and Willingness Towards Covid-19 Vaccine Uptakes in Achieving Nation Goal- A Case of Njombe-Tanzania

AP95: Catherine Bunga, Tanzania

Advancing Public Health: A Successful Endeavor in Increasing COVID-19, Measles and HPV Vaccination Uptake Through Integration Approach in Njombe Region

Track 5.1:

AP175: Mary Mwanabet, Zambia

Unveiling Perspectives: Recipients of Care' Feedback on Facility Service Quality"

AP153: Bernard Mboya, Kenya

Utilization of Kenya community scorecard process to help improve service delivery at PHC facilities in Homa Bay County.

AP64: David Indasi, United Kingdom

Evidence for Systems Strengthening: Social Accountability, Health Leadership and Management, Health Financing and Entrepreneurship

Track 5.2

AP61: Desalegn Zegeye, Ethiopia

Addressing the Wicked Problem of Primary Health Care through a Network of Care: Early Lessons from Ethiopia

AP28: Micah June, Kenya

Socio-demographic factors for exclusive breastfeeding interruption and linear growth in a comprehensive setting in Homa Bay County.

AP126: Renson Owuor, Kenya

Establishing a Risk and Evidence-based Assessment in Molecular Testing Laboratories, Kenya.

AP171: Faiza Barasa, Kenya

Strengthening Primary Health Care Systems in Busia County's Matayos Sub County: Baseline Assessment
AP243: Everlyne Mboga, Kenya
External Quality Assessment as an Improvement Project in Rachuonyo East Sub County Hospital.

AP238: Enzi Pascal, Kenya

Health research systems in low-resource settings: From system analysis, understanding, to system building and strengthening: Kenyan Case Study.

Track 5.3

AP149: Teddy Ruwa, Kenya

Integration of Menstrual Hygiene Management awareness with Kitchen Gardening for Adolescent Girls and Young Women in Mombasa County.

AP201: Rodrick Mwakula, Malawi

Appropriate Sanitation Technology Key to Achieving Sustainable Ultimate Community Sanitation Coverage: Impact of corbelled latrine technology in sanitation promotion in Malawi

Abbreviations

CHS: Center of Health Solutions

CPHD: Center of Public Health Research and Development

JOUST: Jaramogi Oginga Odinga University of Science and Technology

TUK: Technical University of Kenya

RHNK: Reproductive Health Network



CENTER FOR PUBLIC HEALTH AND DEVELOPMENT

Saving Lives Through Innovation

OUR IMPACT 2 M+ Lives Saved

Contact: Lower Hill Duplex

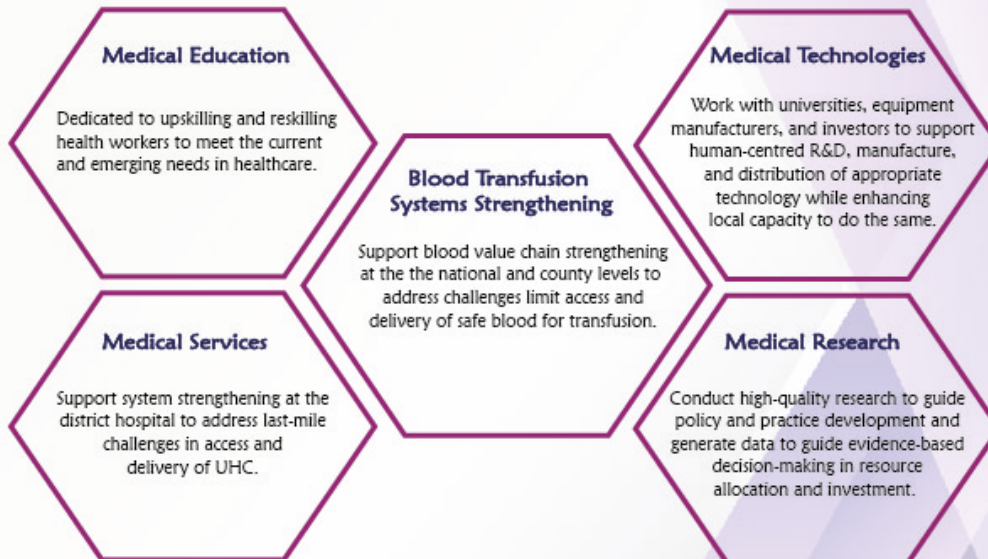
Suite #39 Nairobi

Email: info@cphdev.org

Web: www.cphdev.org

We are a non-profit organization dedicated to improving health systems through innovative medical solutions in East and southern Africa.

OUR PROGRAMMATIC AREAS



African Population and Health Research Center
Transforming Lives in Africa through research.

WHO WE ARE

The African Population and Health Research Center (APHRC) is the continent's premier research and policy organization, exploring population, health, and well-being questions. Headquartered in Nairobi, Kenya, and with a West Africa Regional Office (WARO) in Dakar, Senegal, the Center seeks to drive change with evidence from a growing cadre of research leaders across sub-Saharan Africa.

APHRC, an African-based and African-led institution, has generated evidence for the last two decades shaping policy and practice across African countries. We currently run over 100 projects in 35 countries to engage with policy-makers in the region to influence policy decisions by promoting evidence-informed decision-making (EIDM), thereby contributing to the development of effective public policies, efficient implementation of services, as well as joint learning on interventions that tackle development challenges in African countries.

OUR MISSION

Generating evidence, strengthening research and related capacity in the African R&D ecosystem, and engaging policy to inform action on health and development.

OUR VISION

Transforming lives in Africa through research.

OUR APPROACH

At APHRC, we utilize the evidence-informed decision-making approach in all our work to drive innovation and policy impact. We believe that Africa and African-generated evidence must be at the forefront of decisions supporting improved growth and development. As a progressive global research Center invested in creating legacy impact, our work is centered on three integrated programmatic divisions: Research, Research and Related Capacity Strengthening (RRCS), and Policy Engagement and Communications (PEC).

Read more about APHRC at: www.aphrc.org

CONTACTS

APHRC Headquarters, Kenya

African Population and Health Research Center

Kitisuru, Manga Close, Kirawa road

P.O. Box 10787-00100

Nairobi, Kenya

Email: info@aphrc.org

www.aphrc.org

LactaHub

Breastfeeding Knowledge Platform

- Training
- Webinars
- Reference book
- Ethical framework
- Tools and resources

Access all resources for free:

www.LactaHub.org





www.phcongress.com