



PRIMARY  
HEALTH CARE  
CONGRESS



## Programme

# 1<sup>st</sup> Primary Health Care Congress

**THEME:** Aligning practice to evidence in strengthening  
Primary Health Care for lasting health change in Africa

**Nov 29 - Dec 1, 2023 | Amref International  
University, Nairobi, Kenya**

[www.phcongress.com](http://www.phcongress.com)

## Platinum sponsors



## Gold sponsors



## Bronze sponsors



## Partners



## Day 1 - Wednesday, 29<sup>th</sup> November 2023

Time	Activity
	<b>Master of Ceremony: Dr Josephat Nyagero, Dean of Students, Amref International University</b>
<b>8:00 am - 8.30 am</b>	Arrival, registration of delegates & entertainment
<b>8.30 am - 8.40 am</b>	Anthems (Kenya, East Africa, SADC)
<b>8.40 am - 8.45 am</b>	Video on the journey of PHC
<b>8.45 am - 9.00 am</b>	Welcome remarks and recognition of sponsors <ul style="list-style-type: none"> <li>• <b>Prof Joachim Osur, Vice Chancellor, AMIU</b></li> </ul>
<b>9.00 am - 9.15 am</b>	Keynote address on Global Overview of PHC: Progress, Challenges and Opportunities <ul style="list-style-type: none"> <li>• <b>HE Governor of Kisumu, Prof Anyang' Nyong'o</b></li> </ul>
<b>9.15 am - 9.45 am</b>	Opening remarks <ul style="list-style-type: none"> <li>• <b>Prof Emily Akuno, Vice Chancellor, JOOUST</b></li> <li>• <b>Dr Githinji Gitahi, GCEO, Amref Health Africa</b></li> <li>• <b>Hon. Susan Nakhumicha, Cabinet Secretary, Ministry of Health, Kenya</b></li> </ul>
<b>9.45 am - 10.00 am</b>	<ul style="list-style-type: none"> <li>• <b>Photo session with Cabinet Secretary and Sponsors</b></li> </ul>
	<p><b>Plenary One</b> Panel Session: <b>Primary Health Care: The Past, Present and Future</b></p> <p><b>Moderator: Dr Alice Lakati</b>, Director, Research and Community Extension, Amref International University</p> <p><b>Panelists:</b></p> <ul style="list-style-type: none"> <li>• <b>Dr Patrick Amoth</b>, EBS, Director General, Health, MoH</li> <li>• <b>Dr Meshack Ndirangu</b>, Country Director, Amref Health Africa, Kenya</li> <li>• <b>Professor Dennis Wilms</b>, McMaster University, Canada</li> <li>• <b>Dr Roy Shaffer</b>, Mwalimu Mzee of Primary Health Care</li> <li>• <b>Ambassador Elkanah Odembo</b></li> </ul>
<b>11:00 am - 11:30 am</b>	<b>Networking Tea-Break / Poster Presentations</b>

11.30 am - 1.00 pm	<p><b>Venue: AG 1</b></p> <p><b>Track 1.1:</b></p> <p><b>Community Participation and Engagement of Community Health Workforce</b></p> <p><b>Chair:</b> Prof George Ayodo, JOOUST</p> <p><b>Co-chair:</b> Dr Malkia Abuga, CHESOA</p> <p><b>Facilitator:</b> Dr Faith Muhonja</p>	<p><b>Venue: AF 1.1</b></p> <p><b>Track 1.2:</b></p> <p><b>Models for Universal Health Coverage</b></p> <p><b>Chair:</b> Dr Chris Barasa, Amref</p> <p><b>Co-chair:</b> John Okere, Health Right, Kenya</p> <p><b>Facilitator:</b> Christine Muya</p>	<p><b>Venue: A.F.1.2</b></p> <p><b>Track 2.2:</b></p> <p><b>Resilience</b></p> <p><b>Chair:</b> Mr Peter Ofware, Health Right, Kenya</p> <p><b>Co-chair:</b> Sr Dr Margaret Nyongesa, TUK</p> <p><b>Facilitator:</b> Dr Michel Mutabazi</p>	<p><b>Venue: AF 2.1</b></p> <p><b>Track 1.3:</b></p> <p><b>Quality Service Delivery</b></p> <p><b>Chair:</b> Dr Shiphrah Kuria-Amref</p> <p><b>Co-chair:</b> Dr Shehu Awandu, JOOUST</p> <p><b>Facilitator:</b> Lina Mwita</p>
	<p><b>*AO 33</b></p> <p><b>Caroline Murerwa- Amref Health Africa, Kenya:</b></p> <p>Nyumba kwa nyumba Onsite approach to improve uptake of COVID-19 Vaccination in peri-urban population of Kajiado County, Kenya</p>	<p><b>*AO 90</b></p> <p><b>Frida Akyoo- SOLIDARMED, Tanzania:</b></p> <p>A need assessment for People-centred Primary Health Care (PHC) project in Malinyi District Council- Tanzania- February 2023</p>	<p><b>*AO179</b></p> <p><b>Faith Masika, USAID Western Kenya Sanitation Project, Siaya, Kenya</b></p> <p>Co-creating behavior change Communication for market-based menstrual health and hygiene: Case of USAID funded Western Kenya Sanitation Project.</p>	<p><b>*AO 271</b></p> <p><b>Catherine Gitau: Thinkplace Kenya.</b></p> <p>Utilizing a ticketing service for equity, accountability, and efficiency in MCH service delivery in Kakamega County, Kenya</p>
	<p><b>*AO 55</b></p> <p><b>Dennis Menya-Catholic Medical Mission Board, Kenya:</b></p> <p>Beyond Clinical Care: Peer-led Approach through Community Adolescent Treatment Supporters to Improve retention and Viral suppression among Adolescents Living with HIV in Siaya, Kenya</p>	<p><b>*AO 208</b></p> <p><b>Janekellen Mbae- Amref Health Africa, Kenya:</b></p> <p>Impact of Convenience on COVID -19 Vaccination Uptake; A study of Africa CDC Urgent Support Rapid Response Initiative in Kenya, May-June 2022</p>	<p><b>*AO 156</b></p> <p><b>Gabriel Kotewas- Department of Health, Homa Bay County Kenya</b></p> <p>Effectiveness of indoor residual spray on malaria control; review of malaria cases among children under five years in Rachuonyo North Sub County, Homa Bay County.</p>	<p><b>*AO 315</b></p> <p><b>Dennis Mwiti-Amref Health Africa South Sudan:</b></p> <p>Monitoring the quality of laboratory testing at primary healthcare level through participation in a proficiency testing programme</p>

	<p><b>*AO 144</b></p> <p><b>Aisha Mohammed-Catholic Medical Mission Board, Kenya:</b> The Use of Jamii ni Afya (JnA) Data in Improving Primary Health Care Services in Zanzibar</p>	<p><b>*AO 129</b></p> <p><b>Tesfahun Meto- Arba, Minch University, Ethiopia:</b> Health-Related Quality of Life between Insured and Uninsured Households at Rural Communities of Southwestern Ethiopia, December 2022: A Comparative Cross-Sectional Study</p>	<p><b>*AO 205</b></p> <p><b>Mercy Lodendwa Ministry of Health, Vihiga County, Kenya</b> Reach every child strategy for improving access and utilization of immunization Services in Hard-to-Reach Areas: a case of Mambai Community Unit, Vihiga County, Kenya</p>	<p><b>*AO 275</b></p> <p><b>Eric Omondi: Public Health and Development, Kenya,</b> Enhancing Oxygen Access in Primary Health Care Facilities in Bungoma County, Kenya: Evaluating Innovative Approaches</p>
	<p><b>*AO 48</b></p> <p><b>Crinoline Kiriago-Population Services Kenya:</b> Meaningful adolescent and youth engagement; harnessing the power of participation to bring positive impact-a case study of Binti Shupavu program in Homabay County</p>	<p><b>*AO 303</b></p> <p><b>Theresia Peter -Catholic Medical Mission Board, Kenya:</b> Linda Uzazi: A Multifaceted Approach Towards Improving Maternal and Child Health Outcomes in Underserved Communities of Kitui County</p>	<p><b>*AO 142</b></p> <p><b>Ruth Vellemu, Amref Health Africa, Malawi:</b> Eliminating Gender-based violence against women and girls by addressing underlying causes and ensuring access to reproductive health rights: A case story of Spotlight Initiative, Malawi</p>	<p><b>*AO 157</b></p> <p><b>Gabriel Kotewas-Homa Bay Department of Health:</b> Developing a customized approach for strengthening Quality laboratory diagnostics in resource-limited settings: Lessons from Homa Bay County Inter-Laboratory Comparison program</p>
	<p><b>*AO 148</b></p> <p><b>Ruth Vellemu- Amref Health Africa, Malawi:</b> Expanding Access to COVID-19 Vaccines Through Door-to-Door Approach in Malawi</p>	<p><b>*AO 39</b></p> <p><b>Shegaw Mulu- MOH, Ethiopia:</b> The Capacity of the Ethiopian Primary Health Care System to Achieve Universal Health Coverage and SDGs</p>	<p><b>*AO 270</b></p> <p><b>Victor Bwire, Jacaranda Health, Nairobi:</b> Application of user-centred design in strengthening the participation of communities in the implementation of Service Delivery Redesign in Kakamega County</p>	<p><b>*AO 268</b></p> <p><b>Milliam Ngugi- LVCT Vukisha 95, Kisii County Ministry of Health, Kenya:</b> Quality client-centred services for the Key Population in Magena Hospital, Kisii County</p>

	<p><b>*AO 16</b></p> <p><b>Wallace Karuguti,-Jomo Kenyatta University of Science and Technology, Kenya:</b> Communities' views, attitudes, and recommendations on community-based education of undergraduate Health Sciences students in South Africa</p>	<p><b>*AO 195</b></p> <p><b>Young Samanyika, Amref Health Africa, Malawi:</b> Combating low COVID-19 Vaccination Uptake through a myriad of Mobilisation Approaches: A case of Saving Lives and Livelihoods Project, Malawi</p>		<p><b>*AO 294</b></p> <p><b>Alice Lakati-Amref International University, Kenya:</b> Evaluation of the Pioneer Amref Nursing Oncology Programme in Kenya</p>
	<p><b>*AO 60</b></p> <p><b>Desalegn Zegeye- Amref Health Africa, Ethiopia:</b> An Innovative Approach to Improving Primary Health Care Services in Ethiopia: A Woreda-Level Co-Design Workshop</p>	<p><b>* AO 67</b></p> <p><b>Prof Joachim Osur-Amref International University, Kenya:</b> Epidemiology of Sexual Dysfunctions: The Case of Patients at the Sexology Clinic, Nairobi Kenya</p>		
	<p><b>AO 47</b></p> <p><b>Dalmas Onyango- Witu Community Development Platform, Lamu, Kenya:</b> Community Health Volunteers (CHVs) as key drivers of Access to Primary Health Care (PHC) Services by People Living with HIV (PLHIV) in Lamu County</p>	<p><b>AO 71</b></p> <p><b>Silas Awuor, Microbiology Department, Jaramogi Oginga Odinga Teaching and Referral Hospital, Kenya:</b> Expanding the use of community health workers in rural settings: a potential strategy for progress towards universal health coverage</p>		
<p><b>1:00 pm- 2:00 pm</b></p>	<p><b>Lunch/ Poster Presentations/Networking</b></p>			

	<p><b>Venue: AG 1</b></p> <p><b>Panel Discussion 1:</b></p> <p>Empowering Primary Healthcare workers for better child and Maternal Health by LactaHub Foundation</p> <p><b>Chair:</b> Josephine Munene  <b>Co-chair:</b> Mili and Esther  <b>Facilitator:</b> Valary Jerop</p>	<p><b>Venue: AF 1.1</b></p> <p><b>Panel Discussion 2:</b></p> <p>Medical Equipment Management by Centre for Public Health Research and Development (CPHD)</p> <p><b>Chair:</b> Caroline Kendi  <b>Co-chair:</b> Amos Mumanyi  <b>Facilitator:</b> Dr Michel Mutabazi</p>	<p><b>Venue: AF 2.1</b></p> <p><b>Panel Discussion 3:</b></p> <p>Fundamentals of Primary Health Care Delivery Models in Kenya: Functionality and Sustainability of Primary Care Networks in Kenya by Amref, Kenya</p> <p><b>Chair:</b> Dr Chris Barasa  <b>Facilitator:</b> Dr Faith Muhonja</p>	
<p>4.00 pm- 4.15 pm</p>	<p><b>Networking Tea-Break / Poster Presentations</b></p>			
<p>4.15 pm- 5.45 pm</p>	<p><b>Venue: AG 1</b></p> <p><b>Track 1.4: Digital information for PHC</b></p> <p><b>Chair:</b> Dr Shehu Awandu, JOOUST  <b>Co-chair:</b> John Okere, Healthright  <b>Facilitator:</b> Christine Muya</p>	<p><b>Venue: AF 1.1:</b></p> <p><b>Track 2.1: Resilience</b></p> <p><b>Chair:</b> Evelyne Opondo, ICRW  <b>Co-chair:</b> Dr Michel Mutabazi, AMIU  <b>Facilitator:</b> Timothy Sato</p>	<p><b>Venue: AF 1.2</b></p> <p><b>Track 1.2: Models for Universal Health Coverage</b></p> <p><b>Chair:</b> Dr Micah Matiang'i  Co-chair, APHRC  <b>Facilitator:</b> Jarim Omogi</p>	<p><b>Venue: AF 2.1</b></p> <p><b>Track 2.2: Livelihoods</b></p> <p><b>Chair:</b> Mr Samuel Muhula, Amref  <b>Co-chair:</b> AMIU  <b>Facilitator:</b> Valary Jerop</p>
	<p><b>*AO 276</b></p> <p><b>Imelda Onchari-CPHD, Kenya:</b> Monitoring Power Quality in Homabay, Siaya, and Vihiga County Referral Hospitals, Kenya</p>	<p><b>*AO 207</b></p> <p><b>Mercy Lodendwa -MOH Vihiga County, Kenya:</b> Use of community dialogue in malaria control social behavior change intervention among women of Mambai community unit, Vihiga County, Kenya</p>	<p><b>*AO 212</b></p> <p><b>Sechelanji Nambela Amref Health Africa, Zambia:</b> Utilizing Targeted Outreach Approaches such as Local Market Days to Scale-up Access to Covid-19 Vaccinations in Luapula-Zambia Sept 22-July 23</p>	<p><b>AO 272</b></p> <p><b>Paul Ndeda Jacaranda Health, Kenya</b>  Empowering Mothers with Health Information through PROMPTS: A Transformative AI-Enabled Solution</p>

<p style="text-align: center;"><b>*AO 245</b></p> <p><b>Emmanuel Otieno1- Kenya Malaria Youth Corps Male, Kenya: Leveraging Digital Information for Primary Healthcare:</b> A Case Study of the Kenya Malaria Youth Corps</p>	<p style="text-align: center;"><b>*AO 59</b></p> <p><b>Dennis Ekada- Academic Model Providing Access to HealthCare: AMPATH:</b> Chamas for Change, a Primary Health Care service delivery intervention in pregnancy and infancy among communities in Western Kenya</p>	<p style="text-align: center;"><b>*AO 214</b></p> <p><b>Tseo Silane CHAL, Lesotho</b> Strengthening Covid-19 Vaccination data management for effective epidemic control in Lesotho</p>	<p style="text-align: center;"><b>*AO 29</b></p> <p><b>Harun Owuor-KEMRI, Kenya:</b> Predictors of under-five mortality in Siaya County, Western Kenya Between 2015 and 2020</p>
<p style="text-align: center;"><b>*AO 140</b></p> <p><b>Gloria Kokwijjuka- Amref Health Africa in Tanzania:</b> The effect of digitalization of data collection tools on data quality</p>	<p style="text-align: center;"><b>*AO 103</b></p> <p><b>Magdaline Lipesa-BHESP, Kenya:</b> Approaches to tackle FGM among the AGYW in Narok County</p>	<p style="text-align: center;"><b>*AO 215</b></p> <p><b>Yekeye Raymond ZACK, Zimbabwe:</b> Impact of the Blended Vaccination Service Delivery Model in Increasing Vaccine accessibility to underserved communities of Mashonaland West and Midlands provinces Zimbabwe January- July 2023</p>	<p style="text-align: center;"><b>*AO 313</b></p> <p><b>Joan Ondiro-Jaramogi Oginga Odinga University of Science and Technology:</b> Promoting a Patient-Centred Approach for Improved Tuberculosis Treatment Outcomes in Nairobi County, Kenya</p>
<p style="text-align: center;"><b>*AO 191</b></p> <p><b>Andolo Miheso, PATH, Kenya:</b> Digital health tools to improve quality of care for child survival, growth and development</p>	<p style="text-align: center;"><b>*AO 21</b></p> <p><b>Mariam Florence Yusuf- University of Nairobi, Kenya:</b> <b>Examining the relationship between Partner-related Violence- Contraceptive Use and Consumption of COVID-19 Vaccination (in) Fertility Fears:</b> An Ethnography of Young Women in Khwisero, Kenya</p>	<p style="text-align: center;"><b>*AO 309</b></p> <p><b>Yvonne Opanga, Amref Health Africa, Kenya:</b> Drivers Of Primary Health Care Exemplars in Last Mile Populations In Turkana County, Kenya</p>	



<p style="text-align: center;"><b>*AO 24</b></p> <p><b>Georgiah Nyamtondo Kasori-Amref Tanzania:</b> Community health workers (CHWs) as game changer in improving tuberculosis case notification: Experience from Pwani Region in Tanzania</p>	<p style="text-align: center;"><b>*AO 32</b></p> <p><b>Dickson Mwira-AHA, Kenya:</b> Mobile vaccination clinic potential in improving last mile delivery of COVID-19 vaccination in Marsabit County, Kenya</p>	<p style="text-align: center;"><b>*AO 51</b></p> <p><b>Dennis Menya- Catholic Medical Mission Board, Siaya, Kenya:</b> Breaking the Silence: Building Sustainable and Resilient Community Structures to Mitigate Sexual Gender-based Violence in Gem, Kenya</p>	<p style="text-align: center;"><b>*AO 231</b></p> <p><b>Efraem Kivuyo-Amref, Tanzania:</b> Leverage the Existence of routine program activities in responding to an emergency outbreak of diseases: A case of Murburg Virus Diseases Outbreak Kagera Region, Tanzania</p>
<p style="text-align: center;"><b>*AO 297</b></p> <p><b>Wilfred Otambo- Catholic medical-mission-Ken:</b> Utility of Active Case Detection of epidemic malaria in Nyamira County, Western Kenya</p>	<p style="text-align: center;"><b>*AO 293</b></p> <p><b>Philex Onyango, Ugunja, Kenya:</b> Improving Skilled birth through Community Participatory Learning and action approach in Siaya County</p>	<p style="text-align: center;"><b>*AO 6</b></p> <p><b>Rael Akoru-Turkana County Government, Kenya:</b> Addressing Access to health care services for Children through Schools Integrated Medical Outreaches (SIMOs)</p>	<p style="text-align: center;"><b>*AO 249</b></p> <p><b>Monicah Mwangi-Masinde Muliro University of Science and Technology:</b> Factors influencing sports participation among pupils with Vision Impairment (VI) attending special and inclusive schools in Kakamega County, Kenya</p>
<p style="text-align: center;"><b>*AO 185</b></p> <p><b>Catherine Timanoi- Amref International University:</b> Utilization of one health 'Kimormor' Multi-Sectoral Outreaches for enhanced Nutrition Interventions in Migratory Pastoral Communities of Turkana County, Kenya</p>	<p style="text-align: center;"><b>*AO 296</b></p> <p><b>Victor Bwire, Jacaranda Health, Nairobi, Kenya:</b> Leveraging Private Sector Partnerships to Sustainably Connect High-Risk Mothers to Emergency Transport and Appropriate-Level Quality Care in Kakamega County, Kenya</p>		<p style="text-align: center;"><b>*AO 11</b></p> <p><b>Nancy Gathi - Health Right, Kenya:</b> Effectiveness Of Community Mental Health Among Perinatal Women In Informal Settlements In Nairobi County</p>

	<p><b>*AO 311</b></p> <p><b>Sarah Lokaal, Turkana County Government, Health Department</b></p> <p><b>Bottlenecks and Opportunities in Strengthening Operational Efficiency and Data Interoperability for Primary Healthcare Service Delivery Models in Last Mile Populations In Turkana County, Kenya</b></p>	<p><b>*AO 206</b></p> <p><b>George Ngety, Amref Health Africa, Kenya</b></p> <p>Use of Peer-Led community groups in scaling up PrEP uptake among adolescents and young people: A case of Turkana County</p>		
		<p><b>*AO 251</b></p> <p><b>Abdalazim Merghani-KIT Royal Tropical Institute, Netherlands:</b></p> <p>Rethinking Primary Health Care in Sudan's Journey to Universal Health Coverage</p>		

## Poster Presentations

Track 1.1	Track 1.1	Track 1.1
<p><b>AP 139 : Benson Musau , Kenya</b> Family MUAC-Home based nutrition screening tool for identifying malnourished children in low literacy communities</p> <p><b>AP50: Mercy Wafula, Kenya</b> Assessment of the impact of social behavior on the uptake of the Intermittent Preventive Treatment (IPTp-SP 3) among pregnant women in Hamisi Sub County.</p> <p><b>AP127: Rehema Rashid, Kenya</b> Reaching Adolescents and Young People With SRHR Information In Religious institutions within Mombasa Specifically Kisauni And Nyali Constituency</p> <p>79: Phelix Odhiambo Kenya Equity of access to primary healthcare for vulnerable, General and Key populations in Suna East Migori County Kenya.</p> <p><b>AP69: Silas Awuor, Kenya</b> Realist review of community coalitions and outreach interventions to increase access to primary care for vulnerable populations. AP85: Ibrahim Iwingi, Kenya HPV the silent infection</p> <p><b>AP281: Sarah Kweyamba, Tanzania</b> The use of Client-Centered Approaches to improve COVID-19 vaccination coverage in Saving Lives and Livelihood Project in Tanzania</p> <p><b>AP304: Zipporah Mwangi, Kenya</b> Empowering youth for health change: the impact of Kenya malaria youth corps in strengthening evidence-based community approaches to primary health care access.</p>	<p><b>AP257: Purity Katheu, Kenya</b> Leveraging Community Engagement in Malaria Prevention and Control in Busia County, Kenya, July 2022</p> <p><b>AP242: Brian Odenyo, Kenya</b> The Efficacy of Using Community Health Practitioners in Strengthening PHC Delivery: A COVID-19 Vaccination Case</p> <p><b>AP247: Glenn Mwangi, Kenya</b> Empowering Youth to Combat Malaria: Evidence-Based Community Approaches for Lasting Health Change in Africa</p> <p><b>AP199: Darkson Matchado, Malawi</b> Curbing preventable deaths through essential case management and prevention supplies during Cholera outbreak management: A case of Cholera response in Zomba by Amref Malawi.</p> <p><b>AP91: Duncan Odhiambo, Kenya</b> Role of Mentor Mothers In Elimination of Mother-to-Child Transmission (EMTCT) of HIV/AIDs in Nyahera Sub County Hospital, Kisumu, Kenya.</p> <p><b>AP43: Reinhard Bonke, Kenya</b> A community engagement model to ensure complete uptake of vaccine dosage in Serem Health unit</p> <p><b>AP221: Khadija Badru, Kenya</b> Enhancing HIV/AIDS Management through Community Defaulter Tracing.</p>	<p><b>AP121: Wilfred Gambo, Kenya</b> Reaching Adolescents and Young People with Family Planning Services in Religious Institutions within Kisauni and Nyali Constituencies in Mombasa County.</p> <p><b>AP96: Victor Ruzibukya, Tanzania</b> Acceptance of Community ART Services and its contributing factors among PLHIV; An Exit Survey at Katoro HC in Geita, Tanzania.</p> <p><b>AP239: Enzi Pascal, Kenya</b> Paediatric HIV Care, Treatment, and Monitoring: Current Strategies and Future Directions.</p> <p><b>AP264: Mustafa Asman, Kenya</b> Building a Strong Primary Care Network: Evidence-Based Community Approaches and Quality Service Delivery. A case for Kilifi county</p> <p><b>AP232: Emily Nyanumba, Kenya</b> Translation and adaptation of the stroke-specific quality of life scale into Swahili</p> <p><b>AP168: Christine Muya, Kenya</b> Prevalence of individuals with traumatic spinal cord injury in Nairobi, Kenya.</p> <p style="color: #f4a460;"><b>Track 1.4</b></p> <p><b>AP62: Risper Oyaa, Kenya</b> The transition from Paper Work to Electronic Community Health Information System (Echis) In Nyahera Community Heath Unit- Nyahera Sub County Hospital, Kisumu Kenya</p>

**AP31: Joram Oisebe, Kenya**

Strengthening multisectoral platforms to increase demand for COVID-19 vaccination in Nyaribari Masaba, Kisii county.

**AP72; Fanuel Khainga, Kenya**

Community Smearing Day In Prevention and Control Of Tungiasis, a Case Of Emanyinya Cu In Emuhaya Sub-county, Vihiga County

**AP253: Sheila Kobia, Kenya**

“Contact Tracing: For Early Tuberculosis Detection”

**AP115: Judy Mboku, Kenya**

Use of social accountability to advance Primary Health care through Gender Reproductive Equity.

**AP 15: Wallace Karuguti, Kenya**

Impact of an interprofessional education program on developing skilled graduates well-equipped to practise in rural and underserved areas

**Track 1.2****AP36: Vincent Cheruiyot, Kenya**

From Targeted Outreach to Routine: Evaluating the Impact of COVID-19 Vaccination Outreach Campaigns and Their Implications for Sustainable Vaccination Programs.

**AP98: Beatrice Kabugi, Kenya**

Improving Pre-Exposure Prophylaxis (PrEP) Uptake among Adolescent Girls, Young Women, Pregnant, and Breastfeeding Women in Olenguruone Sub County Hospital

**AP192: Young Samanyika, Malawi**

Ensuring Universal Health Coverage in Emergency Situations: A Case of Emergency Response to Cyclone Idai/ Ana

**AP97: Stella Kassone, Tanzania**

Optimizing Healthcare Resources: Integrating COVID-19 Vaccine in Routine Immunization in Kilimanjaro Region - Tanzania.

**Track 2.1****AP93: Muhammad Shuaib, Kenya**

Hedge on the path to 90-90-90: Qualitative analysis of barriers to engagement in HIV care among adolescents in Mombasa county in the context of test-and-treat.

**AP259: Wangudi Lameck, Kenya**

Fostering Resilience for Health Equity: Evidence-Based Insights on Social Determinants

**AP26: Duncan Odhiambo**

**Ong'ayi, Kenya**

Reaching the Unreached for Antinatal Profile Laboratory Tests in Kisumu West Sub County, Kisumu County, Kenya.

**AP230: Susan Mshai, Kenya**

Immunization defaulter tracing on Rotavirus vaccination for under 5 years children at Kisauni Dispensary, Frere town Ward- Nyali Sub-county.

**AP23: Shally Mahmoud, Kenya**

Achievement from gender non-conforming men (GNC men) and transgender women frontline workers offering HIV self-testing, assisted partner notification and health talk education services.

## Day 2 - Thursday, 30<sup>th</sup> November 2023

Time	Activity
	<b>Master of Ceremony: Prof George Ayodo</b>
<b>8:00 am - 8:30 am</b>	Arrival, registration of delegates & entertainment
<b>8:30 am - 8:45 am</b>	Entertainment (Amref International University)
<b>8.40 am-8.45 am</b>	Video on the journey of PHC
<b>8.45 am - 9.00 am</b>	<p><b>Plenary 2: Primary Health Care Strategies for One Health and Climate Change</b></p> <p>Keynote Speaker</p> <ul style="list-style-type: none"> <li>• <b>Prof Trudie Lang</b>, Founder, Global Health Network</li> </ul>
<b>9.00 am - 10.00 am</b>	<p><b>Plenary 2 panel session:</b> Primary Health Care Strategies for One Health and Climate Change</p> <p><b>Moderator:</b> Peter Ofware, Country Director, HealthRight</p> <p><b>Panelists</b></p> <ul style="list-style-type: none"> <li>• <b>Mr Kay Kutschkau</b>, Lead Knowledge Management &amp; LactaHub, Family Larsson- Rosenquist Foundation</li> <li>• <b>Mr Martin Muchangi</b>, Director of Population Health &amp; Environment, Amref Health Africa</li> <li>• <b>Prof Matilu Mwau</b>, Senior Principal Clinical Research Scientist, KEMRI</li> <li>• <b>Dr Diana Onyango</b>, Head of Technical Team, Farmafrica</li> <li>• <b>Dr Ambrose Kipyegon</b>, Africa One Health University Network</li> </ul>
<b>10:00 am - 10:30 am</b>	<b>Networking Tea-Break / Poster Presentations</b>

<p>10.30 am- 12.00 pm</p>	<p><b>Venue: AG 1</b></p> <p><b>Track 2.3: Education</b></p> <p><b>Chair:</b> Dr Josephat Nyagero, AMIU  <b>Co-chair:</b> Yvonne Opanga, Amref  <b>Facilitator:</b> Nobert Bouret</p>	<p><b>Venue: AF 1.1</b></p> <p><b>Track 3.1:</b></p> <p>Adolescents &amp; Sexual Reproductive Health  <b>Chair:</b> Nelly Munyasia, RHNK  <b>Co-chair:</b> Dr Micah Matiangi, AMIU  <b>Facilitator:</b> Philip Soita</p>	<p><b>Venue: AF 2.1</b></p> <p><b>Track 3.2: Maternal, Child Health &amp; Nutrition</b></p> <p><b>Chair:</b> Dr Peninah Masibo, UCSF  <b>Co-chair:</b> Wycliffe Ogenya  <b>Facilitator:</b> Valary Jerop</p>
	<p><b>*AO 146</b></p> <p><b>Gilbert Sigei- Amref international university, Kenya:</b> Predictors of Effective Preceptorship among nurses in clinical teaching at Tenwek hospital, Bomet, Kenya</p>	<p><b>*AO 49</b></p> <p><b>Dennis Menya-Catholic Medical, Kenya: Diversifying Health Talk:</b> Engagement of External Non-Clinical Facilitators to Bridge Health Education Gaps Among Adolescents and Young People Living with HIV (AYPLHIVs) in Siaya, Kenya.</p>	<p><b>*AO 104</b></p> <p><b>Joseph Mukamba- Pwani University, Kenya:</b> Trends in caesarean section deliveries at Kilifi County Hospital, 2016-2019</p>
	<p><b>*AO 52</b></p> <p><b>Cherop Sam Mawa- Amref Health Africa in Uganda:</b> Community curriculum-based learning in providing Sexual Reproductive Health and Rights (SRHR) information for uptake of Sexual Reproductive Health (SRH)-Family planning services.</p>	<p><b>*AO 213</b></p> <p><b>Marriam Mangochi - Amref Health Africa, Malawi:</b> Addressing High Rates of Adolescent Pregnancies Through Integrated Local Level Multi-Sectoral Response: A Case of USAID Momentum Tikweze Umoyo Project in Malawi</p>	<p><b>*AO 173</b></p> <p><b>Abdullahi Ahmed-AMIU,</b> Somalia Factors influencing utilization of antenatal care services in Garowe, Puntland state of Somalia</p>
	<p><b>*AO 312</b></p> <p><b>Mat Lowe-Society for the Study of Women's Health (SSWH), Gambia:</b> Applying an intersectional lens towards social determinants of maternal health in The Gambia: Insights from the SIMAH Project</p>	<p><b>*AO 223</b></p> <p><b>Oscar Mahinyila- University of Dar es Salaam-Mbeya College of Health and Allied Science (UDSM-MCHAS), Tanzania:</b> Knowledge and practices on the prevention of sexually transmitted infections among college students in Mbozi district - Mbeya, Tanzania</p>	<p><b>*AO 94</b></p> <p><b>Micah June-Jaramogi Oginga Odinga University of Science and Technology, Bondo, Kenya:</b> Factors associated with exclusive breastfeeding interruption and linear growth in a comprehensive support setting in Homa Bay County</p>

<p style="text-align: center;"><b>*AO 222</b></p> <p><b>Moses Sadia- Jaramogi Oginga Odinga University of Science and Technology:</b> Awareness of the Spectrum Condition of Autism Among Pre-primary School Teachers in Western Kenya</p>	<p style="text-align: center;"><b>*AO 74</b></p> <p><b>John Okere-, HealthRight, Kenya: DESIP:</b> Increasing Access to Family Planning for the Marginalized Population in Kenya's Low Contraceptive Prevalence Counties</p>	<p style="text-align: center;"><b>*AO 17</b></p> <p><b>Brenda Mubita- Amref Health Africa, Zambia:</b> Fighting Maternal Mortality through Respectful Maternity Care and Good Customer Care</p>
<p style="text-align: center;"><b>*AO 186</b></p> <p><b>Prof Joachim Osur-Amref International University, Kenya</b> Factors associated with sexual dysfunctions in Nairobi, Kenya</p>	<p style="text-align: center;"><b>*AO 81</b></p> <p><b>Hildah Essendi-Triggerise, Kenya:</b> Layering mental health screening and treatment on HIV prevention, care and treatment improves access to ART and PrEP among adolescents and young adults (15-24 years)</p>	<p style="text-align: center;"><b>*AO 240</b></p> <p><b>Lidya Yohannes- MOH, Ethiopia:</b> Assessment on the Rational Use of Antimalarial Drugs in Health Facilities of Ethiopia, Cross-Sectional Study”</p>
<p style="text-align: center;"><b>*AO 112</b></p> <p><b>Kouemo Motse Dorgelesse Francine Antoinette-</b> University of Buea, Cameroon: Mycobacterium drug resistance and antimycobacterial potentials of selected medicinal plants</p>	<p style="text-align: center;"><b>*AO 89</b></p> <p><b>Miftah Yasin- Samara University, Ethiopia:</b> Reproductive Health Services Utilization and associated factors among youths in Kemmise Town, Northeast Ethiopia</p>	<p style="text-align: center;"><b>*AO 5</b></p> <p><b>Ezekiel Chepkuyeng-Amref International University, Kenya:</b> Behavioral and Social Predictors of Malaria Vaccine Uptake and Hesitancy Among Eligible Children and Their Caregivers in Bumula Sub-county, Bungoma County</p>
<p style="text-align: center;"><b>*AO 203</b></p> <p><b>Pauline Nyokabi- Tharaka Nithi County Government:</b> Leveraging on school health program in promotion of utilization of primary health care services - Jiiinue initiative office of County First lady</p>	<p style="text-align: center;"><b>*AO 193</b></p> <p><b>Joy Ndarathi- Impact 4 Youth, Kenya:</b> Myths Associated with Family Planning among Young Girls: A Case Study of Kisauni Dispensary in Mombasa County</p>	<p style="text-align: center;"><b>*AO 162</b></p> <p><b>North Coast Medical Training College</b> <b>Dennis Songa Health for all:</b> NCMTTC at the core in availing Primary Health Care Services to the Communities</p> <hr/> <p style="text-align: center;"><b>*AO 302</b></p> <p><b>Vincent Opinya, International Rescue Committee, Turkana, Kenya:</b> Integrating child health and nutrition service delivery in primary health care facilities within refugee settings in Kakuma refugee camp</p>

10.30 am- 12.00 pm			<p><b>*AO 182</b></p> <p><b>Fred Mboya- University of Nairobi, Kenya:</b> Prevalence of and Factors associated with exclusive breastfeeding among young mothers at the Maternal and Child Health clinic at Mbagathi County Hospital</p>
	<p><b>Venue: AG 1</b></p> <p><b>Track 3.3 : Mental Health &amp; Gender-based Violence</b></p> <p><b>Chair:</b> Prof Tamary-AMIU <b>Co-chair:</b> Health Right <b>Facilitator:</b> Dr.Mitchel Mutabazi</p>	<p><b>Venue: AF 1.1</b></p> <p><b>Track 3.4: NCDs</b></p> <p><b>Chair:</b> Dr Shiphrah Kuria <b>Co-chair:</b> Dr Dan Onguru, JOOUST <b>Facilitator:</b> Lina Mwita</p>	<p><b>Venue: AF2.1</b></p> <p><b>Track 3.5: Wash, NTDs, CD</b></p> <p><b>Chair:</b> Dr Desalegen Dekele <b>Co-Chair:</b> Samuel Muhula <b>Facilitator:</b> Valary Jerop</p>
	<p><b>*AO 137</b></p> <p><b>James Chrispin-Weill Bugando School of Medicine, Catholic University of Health and Allied Sciences, Tanzania:</b> Prevalence, pattern, and predictors of cardiovascular event in people living with HIV attending clinic and admitted at tertiary hospital in Mwanza region, Tanzania</p>	<p><b>*AO 189</b></p> <p><b>Bilton Sore-Nairobi Hospital, Kenya:</b> Prevalence and Risk Factors of Neck Pain among the Hospital Front and Back Office Workers at the Nairobi Hospital, Kenya</p>	<p><b>*AO 87</b></p> <p><b>Josephine Orare- Amref International University, Kenya:</b> Menstrual Health Practices among Physically Disabled Women and Girls in Masaba North Sub-County, Nyamira County, Kenya</p>
	<p><b>*AO 76</b></p> <p><b>Josephine Nabwesi- Uganda Christian University, Uganda:</b> Pregnant Women's Knowledge, Attitude, and Practice Towards the Attendance of Antenatal Care Services at Mukono General Hospital</p>	<p><b>*AO 99</b></p> <p><b>Adugna Getahun-Hawassa University Comprehensive Specialized Hospital Ethiopia:</b> Time to adjuvant chemotherapy and its predictors among postoperative breast cancer patients at cancer treatment center of Hawassa University Comprehensive Specialized Hospital, Hawassa, Ethiopia 2022</p>	<p><b>*AO 234</b></p> <p><b>Alphaxad Waluse- Amref Health Africa, Tanzania, Tanzania:</b> Enhancing COVID-19 vaccine uptake. The transformative impact of a house-to-house approach in Tanga region, Tanzania.</p>



<p style="text-align: center;"><b>*AO 269</b></p> <p><b>Mary Kemunto- NI, Kenya:</b> Quality rights; Unlocked access and utilization of community-based Mental Health services by people living with Mental health conditions in Isiolo County: community scorecard</p>	<p style="text-align: center;"><b>*AO 101</b></p> <p><b>Rashid Gose- Muhimbili University of Health and Allied Sciences, Tanzania:</b> The lived experiences and caring needs of women diagnosed with cervical cancer: A qualitative study in Dar es Salaam, Tanzania.</p>	<p style="text-align: center;"><b>*AO 25</b></p> <p><b>Dr. Francis Makokha - Ministry of Health Machakos County and Referral Hospital, Kenya:</b> Pre-Exposure Prophylaxis adherence and its determinants among HIV negative partners in discordant relationships seeking care in Machakos county hospitals</p>
<p style="text-align: center;"><b>*AO 65</b></p> <p><b>Leslie Rono- MIDRIFT HURINET, Kenya:</b> Increased access to Mental Health and Psychosocial Support services through provision of WHO's Problem Management Plus by Community Health Promoters in Nakuru County-Kenya</p>	<p style="text-align: center;"><b>*AO 226</b></p> <p><b>Zachariah Muriuki- MOH Kenya:</b> Feasibility of OptiBP Application for Home Blood Pressure Monitoring among People Living with Hypertension in Rwanda</p>	<p style="text-align: center;"><b>*AO 174</b></p> <p><b>Desalegn Bekele Tessema- Amref Health Africa, Ethiopia:</b> Menstrual Hygiene Management as a Business to Ensure Accessibility of Menstrual Hygiene Products in Schools</p>
<p style="text-align: center;"><b>*AO 190</b></p> <p><b>Nancy Gathi- UoN, Kenya:</b> Health Seeking Behavior of Community Health Volunteers working Closely with survivors of Gender Based Violence in Relation to Burnout and Vicarious Trauma in Informal Settlements</p>	<p style="text-align: center;"><b>*AO 224</b></p> <p><b>Irene Bwosi- MOH, Kenya:</b> Health Kiosks in Markets (HEKIMA); Strengthening Primary Care System for Prevention and Control of Cardiovascular Diseases in Vihiga County, Kenya</p>	<p style="text-align: center;"><b>*AO 278</b></p> <p><b>NGIGI EVALINE NJOKI- University of Nairobi, Kenya:</b> The Burden, Clinical Presentation and Clinical Outcome of COVID-19 Among Children Under 13 Years Admitted at Kenyatta National Hospital Between September 2020 and August 2022</p>
<p style="text-align: center;"><b>*AO 12</b></p> <p><b>Lordlaro Lidoros- Maseno University, Kenya:</b> Enhancing Mental health accessibility and Continuity of care</p>	<p style="text-align: center;"><b>*AO 229</b></p> <p><b>James Murray- Amref Health Africa, UK:</b> A comprehensive approach to tackling obstetric fistula: lessons from Uganda and Tanzania</p>	<p style="text-align: center;"><b>*AO 68</b></p> <p><b>Silas Awuor-Microbiology lab, Jaramogi Oginga Odinga. Hospital, Kenya:</b> What makes community health worker models for tuberculosis case finding work? A cross-sectional study of TB to identify success factors for increasing case notifications</p>

<p style="text-align: center;"><b>*AO 154</b></p> <p><b>Rose Betty Mukii- AHA, Kenya:</b> Association between timely reporting of Sexual Gender-Based Violence and uptake of Emergency Contraceptives in Turkana County: A Retrospective Study</p>	<p style="text-align: center;"><b>*AO 7</b></p> <p><b>Caroline Nyandat- KMET, Kenya:</b> Community Approaches for early screening and referrals for breast cancer treatments. Case of Test and Treat Intervention in Nyamira County- Kenya</p>	<p style="text-align: center;"><b>*AO 204</b></p> <p><b>George Ng'ety, AHA Kenya:</b> Retention of Men who have Sex with Men on prevention intervention in a highly stigmatized nomadic community. A case of Lodwar town, Turkana County</p>
<p style="text-align: center;"><b>*AO 45</b></p> <p><b>Stephen Ombija- Amref International University, Kenya:</b> Factors Associated with Recent Intimate Partner Violence in Kibra Informal Settlements; A Cross-Sectional Study, 2023</p>	<p style="text-align: center;"><b>*AO 152</b></p> <p><b>Abraham Ochum- AMIU, Kenya:</b> Clinical Outcomes Associated with Delayed Rehabilitation of Patients Hospitalized With Total Hip Replacement At Selected Hospitals In Nairobi County</p>	
<p style="text-align: center;"><b>*AO 66</b></p> <p><b>David Nieuwe Weme- ARQ, Netherlands: Mental health and structural injustice:</b> a qualitative investigation of interlocking patterns of disadvantage among displaced populations in Nairobi, Kenya'</p>	<p style="text-align: center;"><b>*AO 172</b></p> <p><b>Tiffany Wanjiru, Amref International University</b> <b>Factors Affecting the Utilization of Breast Cancer Screening Services:</b> A Case of Kikuyu Town</p>	<p style="text-align: center;"><b>*AO 138</b></p> <p><b>Prossy Nanatale Nabatte -AMIU, Uganda:</b> The significance of Human Papillomavirus detection among women living with HIV attending antiretroviral therapy clinic in Mukono, Uganda</p>

1.30 pm-  
2.30 pm

**Lunch/ Poster Presentations/Networking**

<p>2.30 pm- 4.00 pm</p>	<p><b>Venue: AG 1</b></p> <p><b>Panel Discussion 4:</b> <b>Implementation research by Africa Population and Health Research Centre (APHRC)</b></p> <p><b>Chair:</b> Dr Fred Wekesa <b>Facilitator:</b> Dr. Faith Muhonja</p>	<p><b>Venue: AF1.1</b></p> <p><b>Panel Discussion 5:</b> <b>Addressing social determinants of health through community-based initiatives by the International Centre for Research on Women (ICRW)</b></p> <p><b>Chair:</b> Evelyne Opondo <b>Facilitator:</b> Peter Soita</p>	<p><b>Venue: AF 1.2</b></p> <p><b>Panel Discussion 6:</b> <b>The role of integration in converging vertical programs with primary care by Centre for Health Solutions - Kenya (CHS)</b></p> <p><b>Chair:</b> Dr Lorraine Mugambi-Nyamboga <b>Facilitator:</b> Lina Mwita</p>	<p><b>Venue: AF 2.1</b></p> <p><b>Panel Discussion 7:</b> <b>Understanding health and health-seeking behaviours at the intersection of prolonged displacement among refugees in Nairobi, Kakuma and Kalobeyei by AMIU/ARQ/IRC</b></p> <p><b>Chair:</b> David Nieuwe Weme <b>Facilitator:</b> Evelyne Muinga</p>
<p>4.00 pm- 4.15 pm</p> <p style="text-align: center;"><b>Networking Tea-Break/ Poster Presentations</b></p>				
	<p><b>Venue: AF 1.1</b></p> <p><b>Panel Discussion 8:</b> <b>Digital Innovations in PHC by Amref International University (Tekeleza Project)</b></p> <p><b>Chair:</b> Priscilla Ngunju/Dr Micah Matiang'i <b>Facilitator:</b> Christine Muya</p>	<p><b>Venue: AF2.1</b></p> <p><b>Panel Discussion 9:</b> <b>The role of global SRHR commitments in the realization of PHC by Reproductive Health Network, Kenya</b></p> <p><b>Chair:</b> Nelly Munyasia <b>Facilitator:</b> Timothy Sato</p>		
<p>5.45 pm- 6.30 pm</p>	<p style="text-align: center;"><b>Venue AG1: Launch of 1000 Research Challenge</b> <b>Lead: Prof Trudie Lang, Founder, Global Health Network</b></p>			

## Poster Presentations

### Track 2.2.

#### **AP299: Faith Nkabai, Kenya**

Empowering Communities for Malaria Control: Evidence-Based Strategies in Strengthening Primary Healthcare a Case of Kenya Malaria Youth Corps.

#### **AP106: Jonathan Ajuma, Nigeria**

Health Equity in Hard-to-Reach Communities in Nigeria's Abia State: An Asset-Based Community Development Intervention to Influence Community Norms and Address Social Determinants of Health

#### **AP92: Steve Mazitsa, Kenya**

Right to Health of Transgender People Living with HIV In Nairobi Kenya

#### **AP159: George Oyucho Kenya**

Social Determinants of Health: A Case Study on Livelihoods and Health Outcomes at Migori County Referral Hospital.

#### **AP254: Philip Opere, Kenya**

Uptake of COVID-19 vaccine among persons living with HIV on antiretroviral Therapy, Siaya County, Kenya.  
AP18: Pauline Omutere, Kenya  
Housing as a social determinant of health.

#### **AP136: Zilpher Audo Kenya**

Widows Economic Challenges contribute to their delay in Accessing Primary Health Care Services

#### **AP13: Lordlaro Lidoros, Kenya**

Strengthening advocacy to reduce frequent uptake of Emergency Contraception Pills (ecps) among students in higher learning institutions.

#### **AP114: Tanya Tabi, Cameroon**

Give A Girl A Hand, Stop Survival Sex and Reduce School Absenteeism

### Track 3.2

#### **AP300: Godfred Amany, Kenya**

Motorcycle ambulance transport saving the lives of pregnant mothers and children in Turkana South.

#### **AP266: Raymond Muhanji, Kenya**

Effect of Introducing Mobile and digital health innovations on maternal and child health outcomes among women of reproductive age (15-49) in Kakamega, Kenya

#### **AP27: Steven Kituyi, Kenya**

Utilisation of antenatal and postnatal group to promote identification and retention of clients seeking MNH services; Case of Bondeni HC, Saboti, Trans Nzoia County, Kenya

#### **AP84: Evance Ogola, Kenya**

Monitoring Maternal and Neonatal Emergency Navigation Triage on Mfangano (momentum): Community-based Study evaluating delays in access to Maternal and Newborn Emergency on Mfangano Island, Kenya

**ABSTRACT 161:** Dietary practices, physical activity, and overnutrition among school-going children aged 8 - 11 years in Thika, Kenya, May 2023

#### **AP108: Kevin Onyango, Kenya**

Support Supervision Booklet Approach: A Case of Migori County Health Programs Adoption, Implementation and Sustainability.

#### **AP83: Evance Ogola, Kenya**

Health Navigation Program: A Community Health Intervention to Expand Access to Emergency Care and Promote Safe Deliveries in Rural Kenya

### Track 3.3.

#### **AP105: Duncan kisilu, Kenya**

The Impact of Youth-Friendly Space on Mental Health

#### **AP255: Daisy Maiyo, Kenya**

The effect of integrating standardized mental health screening tools into routine primary health care assessments

#### **AP248: Brenda Wanjir, Kenya**

Revolutionizing Community Well-Being: Evidence-Based Strategies for Mental Health, Gender Equality, and Violence Prevention in Primary Health Care

#### **AP188: Moline Atieno, Kenya**

The burden of mental health and gender-based violence among men in Chulaimbo Hospital Kisumu County, Kenya.

### Track 2.3

#### **AP237: Odhiambo Ondielo, Kenya**

Factors Influencing Uptake of Cervical Cancer Screening among Female Students at Pwani University

#### **AP04: Brian Kipkoech, Kenya**

Inclusion of Person-Centred Care in Kenyan Undergraduate Nursing Training-A Documentary Analysis of Moi University School of Nursing Curriculum

#### **AP176: Neville Okwaro, Kenya**

Menstrual Hygiene Management Barriers and Enablers in Western Kenya: Assessment by USAID-Funded Western Kenya Sanitation Project

#### **AP202: Knight Kalekye, Kenya**

Factors Influencing Social Determinants of Health among Youths Between 21 to 35 Years Living in Makadara in Nairobi, Kenya.

#### **AP109: Damilola Oni, Vietnam**

IoT-Enabled Healthcare Systems in Africa: Improving Security and Privacy Through Machine Learning And Ethical Considerations

### Track 3.1

#### **AP73: John Ndungu, Kenya**

Adolescents and Young People Teen Mothers Program Success at Rachuonyo District Hospital, Homabay County 2023.

#### **AP288: Dancun Taremwa, Uganda**

System Strengthening To Enable Good Accessibility and Utilization of Immunization Services at Mugarustya HC II, Mbarara District

#### **AP160: Purity Nthenya, Kenya**

Mama Toto Care Initiative in Jomvu Sub-County by Community Health Services Team

#### **AP19: Brenda Mubita, Zambia**

Mutual Accountability in the Fight Against Maternal Mortality

#### **AP131: Leah Kusah Anzani, Kenya**

A Case of Vyemani Community Health Unit- Effective Community to Facility Linkage of Family Planning and Cervical Cancer Screening.

#### **AP37: Evelynne Muinga, Kenya**

Relationship Between Intake of Energy-Dense Diets and Nutritional Status of Adolescents in Primary Schools In Nairobi City County, Kenya

#### **AP70: Silas Awuor, Kenya**

Discrimination and Other Barriers to Accessing Health Care: Viewpoints of HIV positive adolescent with Mild and Moderate Intellectual Disability and their Cares

#### **AP279: Omondi Hannington, Kenya**

Investigating the Prevalence and Determinants of Malnutrition among <5 Children in Korogocho Slum, Nairobi.

### Track 3.4

#### **AP267: Raymond Muhanji, Kenya**

Strengthening health systems to improve health outcomes around NCDs at Primary Healthcare Level in Meru County

#### **AP227: Mamu Athman, Kenya**

Ganahola Community Health Unit Engagement with Mikindani Mcm Link Facility To Ensure Increased Cervical Cancer Screening Services For The Community.

#### **AP308: Winnie Odhiambo, Kenya**

Impact of Intensified Cervical Cancer Screening Towards Scaling Up Early Detection and Initiation of Early Treatment Interventions at Nyahera Sub County Hospital

#### **AP158: Ibrahima Gueye, Senegal**

The innovative approach to decentralized diabetes prevention and management

### Track 3.5

#### **AP30: Bekele Tessema, Ethiopia**

Menstrual Hygiene Management (MHM) in Industries and Workplaces: A Qualitative Evidence from Industries and Sector Offices in Addis Ababa City and Adama Town, Ethiopia Desalegn

#### **AP128: Rozilla Adhiambo, Kenya**

Working with Faith leaders to promote community health and wellbeing

<p><b>AP211: Lucy Ngemu, Kenya</b> Stakeholders' Involvement in Upscaling Menstrual Hygiene Through Sanitary Pads Distribution to Adolescent Girls in Jomvu Kuu Ward, Jomvu Sub-County.</p> <p><b>AP155: Madalitso Tolani, Malawi</b> Sports - A Platform for Captive and Motivated Dialogue for Adolescents SRHR Knowledge Acquisition and Service Uptake</p> <p><b>AP228: Ruth Okoth, Kenya</b> Understanding Barriers To Adolescence Access And Utilization Of Sexual Reproductive Health Services In Ugunja Sub County, Siaya -Kenya</p>	<p><b>AP57: Anjellah Jumah, Kenya</b> Chamas a community-based hybrid strategy of peer support in pregnancy and infancy in Western Kenya. AP161: Margaret Mburu, Kenya Dietary practices, physical activity, and overnutrition among school-going children aged 8 - 11 years in Thika, Kenya, May 2023</p> <p><b>AP14: Lince Mwaizi, Kenya</b> Effective Use Of Short Message Service SMS to Improve Maternal, Child and Nutrition Among Pregnant Mothers at Kimwenge Dispensary</p>	<p><b>AP261: Karen Kamau, Kenya</b> Enhancing Healthcare for Neglected Tropical Diseases through Primary Health Care Principles in Kwale County, Kenya.</p> <p><b>AP08: Obino Tai, Kenya</b> Assessment of Households infected by tungiasis to understand the linkage, Case study of Makuchi sub-location, Hamisi Sub-county, Vihiga County Kenya</p> <p><b>AP286: Michael Kimani, Kenya</b> The Impact of Youth-County Partnerships in the Fight Against Neglected Tropical Diseases (ntds) in Kenyan Counties of the Endemic Regions.</p>
--	--	---

## Day 3 - Friday, 1<sup>st</sup> December 2023

Time	Activity
	<b>Master of Ceremony: Mr Peter Ofware, Country Director Health Right, Kenya</b>
<b>8:00 am - 8:30 am</b>	Arrival and registration
<b>8:30 am - 8:45 am</b>	Entertainment (Amref International University)
<b>8.45 am-9.00 am</b>	<p><b>Plenary 3: Progress, Challenges, and Opportunities in HIV/AIDS and Future Pandemics</b></p> <p>Keynote Speaker</p> <ul style="list-style-type: none"> <li>• <b>Keynote Address: Dr Amos Kibisu, UNAIDS</b></li> </ul>
<b>9.00 am - 10.00 am</b>	<p><b>Plenary 3 panel session:</b> Progress, challenges, and Opportunities in HIV/AIDS and future pandemics</p> <p><b>Moderator:</b></p> <p><b>Panelists</b></p> <ul style="list-style-type: none"> <li>• <b>Dr Bernard Olayo</b>, World Bank/CPHD</li> <li>• <b>Prof Serigne Magueye</b>, President, African Society of Sexual Medicine</li> <li>• <b>Mr Jyoti Tewari</b>, UNFPA</li> <li>• <b>Dr Rose Wafula</b>, Head, NASCOP</li> <li>• <b>Dr Irene Muchoki</b>, Chief Officer of Health, Nairobi County</li> <li>• <b>Dr Willis Omwoyo</b>, Council Member, JOOUST</li> </ul>
<b>10.00 am - 10.30 am</b>	<b>Networking Tea-Break / Poster Presentations</b>

<p><b>10.30 am-12.00 pm</b></p>	<p><b>Venue: AF1.1</b></p> <p><b>Track 4.1:</b>  <b>Improving PHC in the face of climate change; maintaining health system resilience.</b></p> <p><b>Chair:</b> Dr Alice Lakati, AMIU</p> <p><b>Co-chair:</b> Madaliso Tolani</p>	<p><b>Venue: AF 1.2</b></p> <p><b>Track 4.2:</b>  <b>Zoonoses and evidence on the one Health approach</b></p> <p><b>Chair:</b> Dr Diana Onyango, Farmafrica</p> <p><b>Co-chair:</b> Dr Daniel Onguru, JOOUST</p> <p><b>Facilitator:</b> Eddie Machache</p>	<p><b>Venue: AF 2.1</b></p> <p><b>Track 4.3</b>  <b>Use of technology to improve communities' access to Primary Healthcare</b></p> <p><b>Chair:</b> Prof George Ayodo, JOOUST</p> <p><b>Co-chair:</b> Dr Faith Muhonja, AMIU</p> <p><b>Facilitator:</b> Christine Muya</p>	<p><b>10.30 am-1.30 pm</b></p> <p><b>Venue AG 1</b></p> <p><b>African Society for Sexual Medicine Sexual and Reproductive Health and Rights</b></p> <p><b>Concurrent Session:</b> ASSM, UNFPA, NAYA, The Girl Generation</p> <p><b>Chair:</b> Prof Serigne Magueye</p> <p><b>Facilitator:</b> Peter Soita</p>
<p><b>*AO 107</b></p> <p><b>Juliet Shaibu-University of Ibadan, Nigeria:</b> Efficacy of Activated Carbon for Ammonia Gas Reduction in Selected Poultry Farms in Ido Local Government Area, Ibadan, Oyo State, Nigeria</p>		<p><b>*AO 145</b></p> <p><b>Julius Rosenhan- D-Tree-Tanzania:</b> Reaching Zanzibar's children with disabilities: A digitally supported community health initiative delivering disability-focused early childhood development services</p>		<p><b>*AO 194</b></p> <p><b>Mariah Ngutu-- University of Nairobi, Kenya:</b> Healthcare provider perceptions on technology-driven interventions at primary healthcare level: Learnings from the Kenya TIMCI project implementation</p>
<p><b>*AO 120</b></p> <p><b>Charles Muruka:</b> Environmental Public Health Association of Kenya: Compliance of Kenyan Counties with the Sustainable Waste Management Act of 2022: A Case of Five Counties.</p>		<p><b>*AO 38</b></p> <p><b>Risper Oyaa-Kisumu County, Kenya:</b> Impact of CHVs motivation on deliveries and other services at Nyahera sub-county hospital, Kisumu County, Kenya</p>		<p><b>*AO 46</b></p> <p><b>Brenda Metobo-Amref International University, Kenya:</b> Health Service Provider Perceptions on Refugee Health Care Financing In Kenya</p>
<p><b>*AO 273</b></p> <p><b>Muhsin Sheriff- Centres for Health and Education Programmes, Kenya:</b> Building resilience to combat climate change effects on lifestyle and health among impoverished communities in semi-arid Chakama location, Kilifi County</p>		<p><b>*AO 117</b></p> <p><b>Julie Nyanchama Nyamao- University of Nairobi, Kenya:</b> Consensus Building for Community-Based Intervention for Women Following Obstetric Fistula Treatment</p>		<p><b>*AO 277</b></p> <p><b>Caroline Kendi - Center for Public Health and Development, Kenya:</b> An Exploratory Study to Monitor Power, Biomedical Equipment Utilization, Location, and Barriers to Care in Oxygen Equipment in Kakamega Kenya, 2022-2023</p>



<p style="text-align: center;"><b>*AO 122</b></p> <p><b>Kevin Wachira- BHESP, Kenya:</b> Aligning Practice to evidence in Strengthening PHC for lasting Health Change in Africa</p>	<p style="text-align: center;"><b>*AO 252</b></p> <p><b>Susan Cheruiyot- Aga-Khan University-Kenya:</b> Re-imagining nutrition education for pregnant adolescents in the face of climate change: A COPC approach</p>	<p style="text-align: center;"><b>*AO 134</b></p> <p><b>Felix Mandela Akoyo- MoH, Vihiga County Government</b> : Assessment of the Effect of Outreach on Uptake of Pentavalent3 as Community Approach Model that Strengthens Equitable Access to Primary Healthcare Services in Vihiga Sub County</p>
<p style="text-align: center;"><b>*AO 44</b></p> <p><b>Doris Ngassa- Amref International University, Kenya:</b> Prevalence of Staphylococcus aureus in bovine raw milk and associated milking hygiene practices among small-scale farmers in Magu district, Mwanza Tanzania</p>	<p style="text-align: center;"><b>*AO 260</b></p> <p><b>Byrone Wayodi- Ripple Effect-Kenya:</b> Ripple Effect Kenya Community-Based Health Insurance Model</p>	<p style="text-align: center;"><b>*AO 241</b></p> <p><b>Dr Yared Alemu-AYA-Innovation- Ethiopia:</b> Developing AI-Enabled Digital Mental Healthcare to Improve Treatment Outcomes</p>
<p style="text-align: center;"><b>*AO 200</b></p> <p><b>Erik Murimi, M, Sc, Africa One Health University Network, Kenya:</b> The Antimicrobial Resistance Profile of Staphylococcus aureus in Milk in Kenya: A Systematic Review</p>	<p style="text-align: center;"><b>*AO 301</b></p> <p><b>Monthe Sila-IRC:</b> Sustaining Safe Motherhood Practices among women refugees through a community-based model in Kakuma refugee camp.</p>	<p style="text-align: center;"><b>*AO 119</b></p> <p><b>Veronica Njambi- Pharmaceutical Society of Kenya, Kenya:</b> Expanding access to Family Planning through community pharmacies</p>
<p style="text-align: center;"><b>*AO 10</b></p> <p>Obino Tai- Vihiga County Dep. Health : Evaluation Of Upper Respiratory Tract Infection Management to Understand the Drivers of Antimicrobial Resistance Amongst Kitagwa And Tigoi Community Unit Residents, Vihiga County</p>	<p style="text-align: center;"><b>*AO 169</b></p> <p>Dancun Ngwara, MOH, Kenya: Village Mop up of Missed Opportunities for Immunization</p>	<p style="text-align: center;"><b>*AO 196</b></p> <p>Elvis Mwinyi- Impact 4 Youth Kenya, Kenya: Embracing Diversity and Fostering Inclusion for Adolescents and Young People’s Sexual and Reproductive Health and Rights: A Case of Kisauni Dispensary, Mombasa County</p>

<p>12.00 pm- 1.30 pm</p>	<p><b>Venue: AF1.1</b></p> <p><b>Track 4.4: New evidence on the management of infectious diseases including environmental drivers of antimicrobial resistance.</b></p> <p><b>Chair:</b> Prof Ayodo</p> <p><b>Co-chair:</b> Dr Clarice Ambale, CHS</p> <p><b>Facilitator:</b> Eddie Machache</p>	<p><b>Venue: AF 1.2</b></p> <p><b>Track 5.1: Role of citizens' voices in improving access to PHC services</b></p> <p><b>Chair:</b> Mr Peter Ofware, Healthright</p> <p><b>Co-chair:</b> Dr Catherine Wambua, WB</p> <p><b>Facilitator:</b> Dr Michel Mutabazi</p>	<p><b>Venue: AF 2.1</b></p> <p><b>Track 5.2: Effective health leadership and governance approaches and Practices</b></p> <p><b>Chair:</b> Sr. Dr Margaret Nyongesa</p> <p><b>Co-chair:</b> Dr Dancan Irungu</p> <p><b>Facilitator:</b> Lina Mwita</p>
	<p><b>*AO 280</b></p> <p><b>Kelvin Kaloki-LVCT Health-Kenya:</b> Integrated Community-Based Approaches to Accelerate COVID-19 Vaccination Uptake</p>	<p><b>*AO 198</b></p> <p>Young Samanyika- Amref Health Africa, Malawi: Community-Based Management (CMB) of WASH facilities; sure, way of attaining Lasting Health Change in Malawi</p>	<p><b>*AO 310</b></p> <p>Mark Mwanja - Amref Health Africa, Kenya: One size does not fit all: Paradigm shift in Primary Healthcare Governance and Policy Frameworks for differentiated contexts in Kenya</p>
	<p><b>*AO 305</b></p> <p><b>Sila Monthe- IRC-Kenya:</b> Sustaining safe motherhood practices among women refugees through a community-based model in Kakuma refugee camp</p>	<p><b>*AO 63</b></p> <p><b>Rawiyah Aboud- Amref International University, Kenya:</b> The Decision-Making Process in Reporting Sexual Violence among Somali Refugee Women in Nairobi, Kenya</p>	<p><b>*AO 183</b></p> <p><b>David Nyajowi- USAID Western Kenya Sanitation Project, Kenya:</b> Effective Coordination of Market-based Menstrual Hygiene Management through Established County-led Steering Committees: Intervention by USAID-funded Western Kenya Sanitation Project</p>
	<p><b>*AO 287</b></p> <p><b>Cynthia Wailula- UHC Lab, AMREF:</b> Strengthening PHC Workforce Financing for Health Equity: Insights from Kenya, Zambia, and South Sudan</p>	<p><b>*AO 258</b></p> <p><b>Malkia Abuga- Nairobi County Government, Kenya:</b> Potential of Community Scorecard in Ensuring Accountability in Nairobi County, Kenya</p>	<p><b>*AO 291</b></p> <p><b>Anke van der Kwaak- KIT Royal Tropical Institute, Netherlands:</b> Community Life Centers in Kenya and South Africa as an innovative model for primary health care; from co-creation to governance and leadership</p>

<p style="text-align: center;"><b>*AO 135</b></p> <p><b>TIMINAH Gwasima- Vihiga County Referral Hospital:</b> Universal Health Coverage by progressively facilitating access to services by all</p>	<p style="text-align: center;"><b>*AO 244</b></p> <p><b>John Mwangi- Kenya Malaria Youth Corps, Kenya:</b> Amplifying Citizen Voices to Enhance Access to Primary Healthcare Services: A Case Study of the Kenya Malaria Youth Corps</p>	<p style="text-align: center;"><b>*AO 290</b></p> <p><b>Cynthia Waliaula- Amref Health Africa Headquarters, Kenya:</b> Revolutionising Primary Healthcare: Accelerating Policy Reforms through Cross-Country Learning Initiatives</p>
<p style="text-align: center;"><b>*AO 35</b></p> <p><b>Kizito Mukhwana- Goldstar Kenya:</b> Enhanced uptake of ANC services in early gestation through community-Adopted Pregnancy Screening Tools, Mapping, and Referral in Nakuru County</p>	<p style="text-align: center;"><b>*AO 181</b></p> <p><b>Leah Ogada- Triggerise, Kenya:</b> The role of service satisfaction in promoting continuation of Short Acting Method Usage Amongst Adolescent Girls and Young Women (AGYW)</p>	<p style="text-align: center;"><b>*AO 147</b></p> <p><b>Julian Nyamupachitu- ReAct Africa, Kenya:</b> Mobilizing youth in Africa for action on Antimicrobial Resistance through a Leadership Program</p>
<p style="text-align: center;"><b>*AO 284</b></p> <p><b>Samira Nassir, German Doctors:</b> Integrating Nutrition and Pediatric Clinics to Increase Childhood Tuberculosis Diagnosis in Mathare Slums; A Case Of German Doctors Baraka Health Center In Nairobi Kenya</p>	<p style="text-align: center;"><b>*AO 58</b></p> <p><b>Dalmas Onyango- Witu Community Development Platform, Kenya:</b> Community-Led monitoring Intervention to Improve access and Accountability in provision of Primary Health Care services for people living with HIV (PLHIV) in Lamu County</p>	<p style="text-align: center;"><b>*AO 78</b></p> <p><b>Reinhard Bonnke- MOH, Kenya:</b> CHPs pamoja twaweza</p>
<p style="text-align: center;"><b>*AO 41</b></p> <p><b>Zewdneh Shewamene- Amref-Ethiopia:</b> Maternal healthcare at the newly established comprehensive health posts in pastoral settings of Ethiopia: Care experiences and perceptions of mothers and providers</p>	<p style="text-align: center;"><b>*AO 298</b></p> <p><b>Brian Okada Amref Health Africa in Kenya- Ethics and Scientific Review Committee, Kenya:</b> Scope and Ethical Issues from Primary Health Care Research Studies reviewed and approved by the Amref Ethics and Scientific Review Committee (ESRC)</p>	<p style="text-align: center;"><b>*AO 292</b></p> <p>Salome Sijenyi- AMPATH, Kenya: Hospitals are medicine and more....? An assessment of subsidized health insurance beneficiaries' experience in Western Kenya</p> <hr/> <p style="text-align: center;"><b>AO 40</b></p> <p>Temesgen Ayehu-MOH Ethiopia: Assessment of the governance system of the Ethiopian Primary Health Care System at National and sub-national Levels</p>

<p>1.30 pm - 2.30 pm</p>	<p style="text-align: center;"><b>LUNCH/ Poster Presentations</b></p>
<p>2.30 pm- 2.45 pm</p>	<p><b>Closing Plenary 4</b></p>
	<p><b>Awards and Launches</b></p> <p><b>Awards:</b></p> <ul style="list-style-type: none"> <li>• <b>Hackathon: Dr Dancan Irungu</b>, Lead- Entrepreneurship and Dean, Graduate School</li> <li>• <b>Best Student, Most disruptive, Most entrepreneurial oral/poster presenters</b>, Prof George Ayodo, JOOUST</li> </ul> <p><b>Launches</b></p> <ul style="list-style-type: none"> <li>• <b>Journal of Primary Health Care: Prof Serigne Magueye</b>, President, African Society of Sexual Medicine</li> <li>• <b>Primary Health Care Centre of Excellence: Prof Dennis Wilms</b>, McMaster University, Canada</li> </ul> <p><b>Summary Report of the 1st Primary Health Care Congress: Dr Josephat Nyagero</b>, Dean of Students</p> <p><b>Announcements</b></p> <p><b>Vote of thanks: Dr Alice Lakati</b>, Director, Research and Community Extension</p> <p><b>Official closure: Prof Joachim Osur</b>, Vice Chancellor</p> <p><b>Departure</b></p>

## Poster Presentations

### Track 4.1

#### AP256: Maweu Kimondiu, Kenya

Combating Climate Change: Championing Malaria Social Behaviour Change Sensitization in Schools in Machakos County, Kenya

AP274: Nyamolo Vincent, Kenya  
The struggle of rural areas in maintaining PHC resilience in the wake of climate change: Is there hope?

### Track 4.3

#### AP75: Njige, Tanzania

My Medics software application Paul

### Track 4.4

#### AP88: Catherine Bunga, Tanzania

Trust and Willingness Towards Covid-19 Vaccine Uptakes in Achieving Nation Goal- A Case of Njombe-Tanzania

#### AP95: Catherine Bunga, Tanzania

Advancing Public Health: A Successful Endeavor in Increasing COVID-19, Measles and HPV Vaccination Uptake Through Integration Approach in Njombe Region

### Track 5.1:

#### AP175: Mary Mwanabet, Zambia

Unveiling Perspectives: Recipients of Care' Feedback on Facility Service Quality"

#### AP153: Bernard Mboya, Kenya

Utilization of Kenya community scorecard process to help improve service delivery at PHC facilities in Homa Bay County.

#### AP64: David Indasi, United Kingdom

Evidence for Systems Strengthening: Social Accountability, Health Leadership and Management, Health Financing and Entrepreneurship

### Track 5.2

#### AP61: Desalegn Zegeye, Ethiopia

Addressing the Wicked Problem of Primary Health Care through a Network of Care: Early Lessons from Ethiopia

#### AP28: Micah June, Kenya

Socio-demographic factors for exclusive breastfeeding interruption and linear growth in a comprehensive setting in Homa Bay County.

#### AP126: Renson Owuor, Kenya

Establishing a Risk and Evidence-based Assessment in Molecular Testing Laboratories, Kenya.

### AP171: Faiza Barasa, Kenya

Strengthening Primary Health Care Systems in Busia County's Matayos Sub County: Baseline Assessment  
AP243: Everlyne Mboga, Kenya  
External Quality Assessment as an Improvement Project in Rachuonyo East Sub County Hospital.

### AP238: Enzi Pascal, Kenya

Health research systems in low-resource settings: From system analysis, understanding, to system building and strengthening: Kenyan Case Study.

### Track 5.3

#### AP149: Teddy Ruwa, Kenya

Integration of Menstrual Hygiene Management awareness with Kitchen Gardening for Adolescent Girls and Young Women in Mombasa County.

#### AP201: Rodrick Mwakula, Malawi

Appropriate Sanitation Technology Key to Achieving Sustainable Ultimate Community Sanitation Coverage: Impact of corbelled latrine technology in sanitation promotion in Malawi

## Abbreviations

**CHS:** Center of Health Solutions

**CPHD:** Center of Public Health Research and Development

**JOOUST:** Jaramogi Oginga Odinga University of Science and Technology

**TUK:** Technical University of Kenya

**RHNK:** Reproductive Health Network



# CENTER FOR PUBLIC HEALTH AND DEVELOPMENT

Saving Lives Through Innovation

**OUR IMPACT** 2 M+ Lives Saved

Contact: Lower Hill Duplex

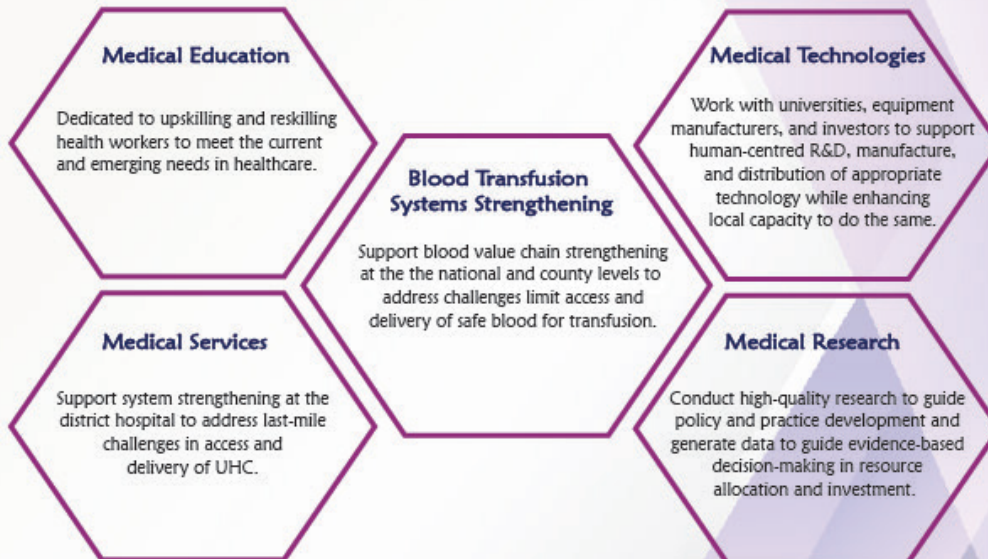
Suite #39 Nairobi

Email: [info@cphdev.org](mailto:info@cphdev.org)

Web: [www.cphdev.org](http://www.cphdev.org)

We are a non-profit organization dedicated to improving health systems through innovative medical solutions in East and southern Africa.

## OUR PROGRAMMATIC AREAS



African Population and Health Research Center  
Transforming Lives in Africa through research.

## WHO WE ARE

The African Population and Health Research Center (APHRC) is the continent's premier research and policy organization, exploring population, health, and well-being questions. Headquartered in Nairobi, Kenya, and with a West Africa Regional Office (WARO) in Dakar, Senegal, the Center seeks to drive change with evidence from a growing cadre of research leaders across sub-Saharan Africa.

APHRC, an African-based and African-led institution, has generated evidence for the last two decades shaping policy and practice across African countries. We currently run over 100 projects in 35 countries to engage with policy-makers in the region to influence policy decisions by promoting evidence-informed decision-making (EIDM), thereby contributing to the development of effective public policies, efficient implementation of services, as well as joint learning on interventions that tackle development challenges in African countries.

## OUR MISSION

Generating evidence, strengthening research and related capacity in the African R&D ecosystem, and engaging policy to inform action on health and development.

## OUR VISION

Transforming lives in Africa through research.

## OUR APPROACH

At APHRC, we utilize the evidence-informed decision-making approach in all our work to drive innovation and policy impact. We believe that Africa and African-generated evidence must be at the forefront of decisions supporting improved growth and development. As a progressive global research Center invested in creating legacy impact, our work is centered on three integrated programmatic divisions: Research, Research and Related Capacity Strengthening (RRCS), and Policy Engagement and Communications (PEC).

Read more about APHRC at: [www.aphrc.org](http://www.aphrc.org)

## CONTACTS

APHRC Headquarters, Kenya

African Population and Health Research Center

Kitisuru, Manga Close, Kirawa road

P.O. Box 10787-00100

Nairobi, Kenya

Email: [info@aphrc.org](mailto:info@aphrc.org)

[www.aphrc.org](http://www.aphrc.org)

# LactaHub

## Breastfeeding Knowledge Platform

- Training
- Webinars
- Reference book
- Ethical framework
- Tools and resources

Access all resources for free:

[www.LactaHub.org](http://www.LactaHub.org)





[www.phcongress.com](http://www.phcongress.com)